

Anti-ALYREF antibody (158-257) [S6MR] (STJ11102036)

GENERAL INFORMATION

Product Type	Primary antibodies
Applications	WB/IHC-P/ELISA
Host / Source	Rabbit
Reactivity	Human/Mouse/Rat

PRODUCT PROPERTIES

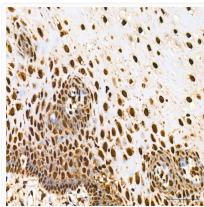
Clonality	Monoclonal
Concentration	Lot specific
Conjugation	Unconjugated
Purification	Affinity purification
Dilution Range	WB:1:500-1:1000 IHC-P:1:500-1:1000 ELISA:Recommended starting concentration is 1 Mu g/mL. Please optimize the concentration based on your specific assay requirements.
Formulation	PBS with 0.02% Sodium Azide, 0.05% BSA, 50% Glycerol, pH 7.3.
Isotype	IgG
Molecular Weight	Protein Mw: 27kDa Observed Mw: 32kDa
Storage Instruction	Store at -20°C for up to 1 year from the date of receipt, and avoid repeat freeze-thaw cycles.

TARGET INFORMATION

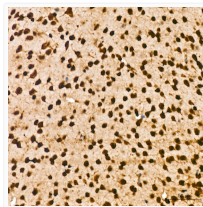
Gene ID	10189
Gene Symbol	ALYREF
UniProt ID	THOC4_HUMAN
Immunogen Region	158-257
Immunogen Sequence	DALKAMKQYNGVPLDGRPMN IQLVTSQIDAQRPAQSVNR GGMTRNRGAGGFGGGGGTRR GTRGGARGRGRGAGRNSKQQ LSAEELDAQLDAYNARMDTS
Specificity	A synthetic peptide corresponding to a sequence within amino acids 158-257 of human THOC4/ALYREFREF (Q86V81).

ADDITIONAL INFORMATION

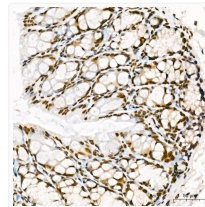
Note STRICTLY FOR FURTHER SCIENTIFIC RESEARCH USE ONLY (RUO). MUST NOT TO BE USED IN DIAGNOSTIC OR THERAPEUTIC APPLICATIONS.



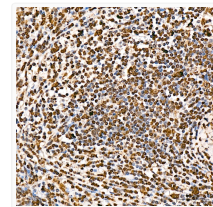
Immunohistochemistry analysis of THOC4/ALYREF in paraffin-embedded human esophagus tissue using THOC4/ALYREF Rabbit monoclonal antibody (STJ11102036) at a dilution of 1:800 (40x lens). High pressure antigen retrieval was performed with 0.01 M citrate buffer (pH 6.0) prior to immunohistochemistry staining.



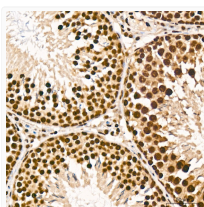
Immunohistochemistry analysis of THOC4/ALYREF in paraffin-embedded mouse brain tissue using THOC4/ALYREF Rabbit monoclonal antibody (STJ11102036) at a dilution of 1:800 (40x lens). High pressure antigen retrieval was performed with 0.01 M citrate buffer (pH 6.0) prior to immunohistochemistry staining.



Immunohistochemistry analysis of THOC4/ALYREF in paraffin-embedded mouse colon tissue using THOC4/ALYREF Rabbit monoclonal antibody (STJ11102036) at a dilution of 1:800 (40x lens). High pressure antigen retrieval was performed with 0.01 M citrate buffer (pH 6.0) prior to immunohistochemistry staining.



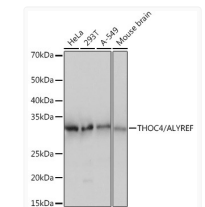
Immunohistochemistry analysis of THOC4/ALYREF in paraffin-embedded human spleen tissue using THOC4/ALYREF Rabbit monoclonal antibody (STJ11102036) at a dilution of 1:800 (40x lens). High pressure antigen retrieval was performed with 0.01 M citrate buffer (pH 6.0) prior to immunohistochemistry staining.



Immunohistochemistry analysis of THOC4/ALYREF in paraffin-embedded rat testis tissue using THOC4/ALYREF Rabbit monoclonal antibody (STJ11102036) at a dilution of 1:800 (40x lens). High pressure antigen retrieval was performed with 0.01 M citrate buffer (pH 6.0) prior to immunohistochemistry staining.



Immunohistochemistry analysis of THOC4/ALYREF in paraffin-embedded mouse heart tissue using THOC4/ALYREF Rabbit monoclonal antibody (STJ11102036) at a dilution of 1:800 (40x lens). High pressure antigen retrieval was performed with 0.01 M citrate buffer (pH 6.0) prior to immunohistochemistry staining.



Western blot analysis of various lysates using THOC4/ALYREFREF Rabbit monoclonal antibody (STJ11102036) at 1:1000 dilution. Secondary antibody: HRP Goat Anti-Rabbit IgG (H+L) (STJS000856) at 1:10000 dilution. Lysates/proteins: 25 Mu g per lane. Blocking buffer: 3% nonfat dry milk in TBST. Detection: ECL Basic Kit. Exposure time: 1s.