

Anti-MRE11 antibody (400-500) [S0MR] (STJ11102020)

GENERAL INFORMATION

Product Type	Primary antibodies
Applications	WB/ELISA/ChIP
Host / Source	Rabbit
Reactivity	Human/Mouse

PRODUCT PROPERTIES

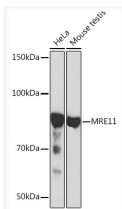
Clonality	Monoclonal
Concentration	Lot specific
Conjugation	Unconjugated
Purification	Affinity purification
Dilution Range	WB:1:500-1:2000 ELISA:Recommended starting concentration is 1 Mu g/mL. Please optimize the concentration based on your specific assay requirements. ChIP:5 Mu g antibody for 10 Mu g-15 Mu g of Chromatin
Formulation	PBS with 0.02% Sodium Azide, 0.05% BSA, 50% Glycerol, pH 7.3.
Isotype	IgG
Molecular Weight	Protein Mw: 81kDa Observed Mw: 81kDa
Storage Instruction	Store at -20°C for up to 1 year from the date of receipt, and avoid repeat freeze-thaw cycles.

TARGET INFORMATION

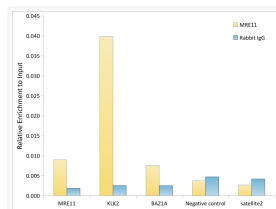
Gene ID	4361
Gene Symbol	MRE11
UniProt ID	MRE11_HUMAN
Immunogen Region	400-500
Immunogen Sequence	RHREQKEKTGEEINFGKLIT KPSEGTTLRVEDLVKQYFQT AEKNVQLSLLTERGMGEAVQ EFVDKEEKDAIEELVKYQLE KTQRFLKERHIDALEDKIDE E
Specificity	A synthetic peptide corresponding to a sequence within amino acids 400-500 of human MRE11 (P49959).

ADDITIONAL INFORMATION

Note **STRICTLY FOR FURTHER SCIENTIFIC RESEARCH USE ONLY (RUO). MUST NOT TO BE USED IN DIAGNOSTIC OR THERAPEUTIC APPLICATIONS.**



Western blot analysis of extracts of various cell lines, using MRE11 rabbit monoclonal antibody (STJ11102020) at 1:1000 dilution. Secondary antibody: HRP Goat Anti-rabbit IgG (H+L) (STJS000856) at 1:10000 dilution. Lysates/proteins: 25 Mu g per lane. Blocking buffer: 3% non-fat dry milk in TBST. Detection: ECL Basic Kit. Exposure time: 30s.



Chromatin immunoprecipitation analysis of extracts of LNCaP cells, using Mre11 antibody (STJ11102020) and rabbit IgG. The amount of immunoprecipitated DNA was checked by quantitative PCR. Histogram was constructed by the ratios of the immunoprecipitated DNA to the input.