

Anti-PLAT antibody (463-562) [S7MR] (STJ11102017)

GENERAL INFORMATION

Product Type	Primary antibodies
Applications	WB/IF/ICC/ELISA
Host / Source	Rabbit
Reactivity	Human/Mouse/Rat

PRODUCT PROPERTIES

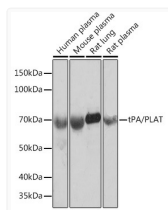
Clonality	Monoclonal
Concentration	Lot specific
Conjugation	Unconjugated
Purification	Affinity purification
Dilution Range	WB:1:1000-1:6000 IF/CC:1:100-1:400 ELISA:Recommended starting concentration is 1 Mu g/mL. Please optimize the concentration based on your specific assay requirements.
Formulation	PBS with 0.02% Sodium Azide, 0.05% BSA, 50% Glycerol, pH 7.3.
Isotype	IgG
Molecular Weight	Protein Mw: 63kDa Observed Mw: 70kDa
Storage Instruction	Store at -20°C for up to 1 year from the date of receipt, and avoid repeat freeze-thaw cycles.

TARGET INFORMATION

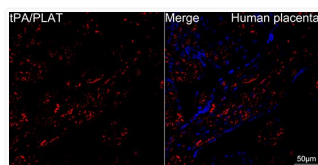
Gene ID	5327
Gene Symbol	PLAT
UniProt ID	TPA_HUMAN
Immunogen Region	463-562
Immunogen Sequence	LKEAHVRLYPSSRCTSQHLL NRTVTDNMLCAGDTRSGGPQ ANLHDACQGDSGGPLVCLND GRMTLVGIISWGLGCGQKDV PGVYTKVTNYLDWIRDNMRP
Specificity	A synthetic peptide corresponding to a sequence within amino acids 463-562 of human tPA/tPA/PLAT (P00750).

ADDITIONAL INFORMATION

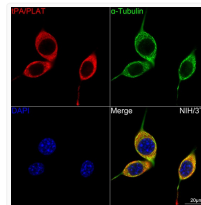
Note STRICTLY FOR FURTHER SCIENTIFIC RESEARCH USE ONLY (RUO). MUST NOT TO BE USED IN DIAGNOSTIC OR THERAPEUTIC APPLICATIONS.



Western blot analysis of extracts of various cell lines, using tPA/tPA/PLAT rabbit monoclonal antibody (STJ11102017) at 1:1000 dilution. Secondary antibody: HRP Goat Anti-rabbit IgG (H+L) (STJS000856) at 1:10000 dilution. Lysates/proteins: 25 Mu g per lane. Blocking buffer: 3% non-fat dry milk in TBST. Detection: ECL Basic Kit. Exposure time: 10s.



Confocal imaging of human placenta using tPA/PLAT rabbit monoclonal antibody (STJ11102017, at dilution of 1:100) (Red). DAPI was used for nuclear staining (blue). Objective: 40x. Perform high pressure antigen retrieval with 10 mM citrate buffer pH 6. 0 before commencing with IF staining protocol.



Confocal imaging of NIH/3T3 cells using tPA/PLAT rabbit monoclonal antibody (STJ11102017, at dilution of 1:100) (Red). The cells were counterstained with Alpha-Tubulin mouse monoclonal antibody (dilution 1:400) (Green). DAPI was used for nuclear staining (blue). Objective: 100x.