

## Anti-EMD antibody (150-254) [S3MR] (STJ11102013)

### GENERAL INFORMATION

Product Type	Primary antibodies
Applications	WB/IHC-P/IF/ICC/ELISA
Host / Source	Rabbit
Reactivity	Human/Mouse/Rat

### PRODUCT PROPERTIES

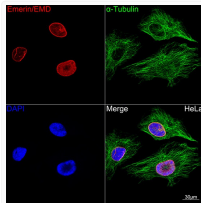
Clonality	Monoclonal
Concentration	Lot specific
Conjugation	Unconjugated
Purification	Affinity purification
Dilution Range	WB:1:500-1:1000 IHC-P:1:50-1:200 IF/ICC:1:50-1:200 ELISA:Recommended starting concentration is 1 Mu g/mL. Please optimize the concentration based on your specific assay requirements.
Formulation	PBS with 0.02% Sodium Azide, 0.05% BSA, 50% Glycerol, pH 7.3.
Isotype	IgG
Molecular Weight	Protein Mw: 29kDa Observed Mw: 30kDa/35kDa
Storage Instruction	Store at -20°C for up to 1 year from the date of receipt, and avoid repeat freeze-thaw cycles.

### TARGET INFORMATION

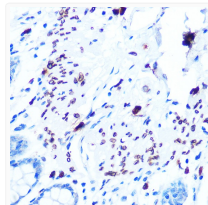
Gene ID	<a href="#">2010</a>
Gene Symbol	<a href="#">EMD</a>
UniProt ID	<a href="#">EMD_HUMAN</a>
Immunogen Region	150-254
Immunogen Sequence	RERPMYGRDSAYQSITHYRP VSASRSSLDSYYPTSSSTS FMSSSSSSSSWLTRAIRPE NRAPGAGLGQDRQVPLWGQL LLFLVFVIVLFFIYHFMAE EGNPF
Specificity	A synthetic peptide corresponding to a sequence within amino acids 150-254 of human Emerin/EMD (P50402).

### ADDITIONAL INFORMATION

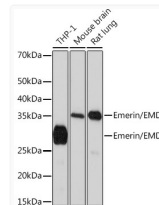
Note STRICTLY FOR FURTHER SCIENTIFIC RESEARCH USE ONLY (RUO). MUST NOT TO BE USED IN DIAGNOSTIC OR THERAPEUTIC APPLICATIONS.



Confocal imaging of HeLa cells using Emerin/EMD Rabbit monoclonal antibody (STJ11102013, dilution 1:100) (Red). The cells were counterstained with Alpha-tubulin (ubiquitous) chain Rabbit monoclonal antibody (dilution 1:100) (Green). DAPI was used for nuclear staining (blue). Objective: 60x.



Immunohistochemistry analysis of Emerin/EMD in paraffin-embedded human colon using Emerin/EMD Rabbit monoclonal antibody (STJ11102013) at dilution of 1:100 (40x lens). Perform microwave antigen retrieval with 10 mM PBS buffer pH 7.2 before commencing with immunohistochemistry staining protocol.



Western blot analysis of various lysates using Emerin/EMD Rabbit monoclonal antibody (STJ11102013) at 1:1000 dilution. Secondary antibody: HRP Goat Anti-Rabbit IgG (H+L) (STJS000856) at 1:10000 dilution. Lysates/proteins: 25 Mu g per lane. Blocking buffer: 3% nonfat dry milk in TBST. Detection: ECL Basic Kit. Exposure time: 90s.