

Anti-SDC1 antibody (23-254) [S0MR] (STJ11102010)

GENERAL INFORMATION

Product Type	Primary antibodies
Applications	WB/IHC-P/IF/ICC/ELISA
Host / Source	Rabbit
Reactivity	Human/Mouse/Rat

PRODUCT PROPERTIES

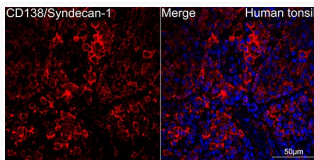
Clonality	Monoclonal
Concentration	Lot specific
Conjugation	Unconjugated
Purification	Affinity purification
Dilution Range	WB:1:1000-1:2000 IHC-P:1:2000-1:8000 IF/ICC:1:100-1:1000 ELISA:Recommended starting concentration is 1 Mu g/mL. Please optimize the concentration based on your specific assay requirements.
Formulation	PBS with 0.02% Sodium Azide, 0.05% BSA, 50% Glycerol, pH 7.3.
Isotype	IgG
Molecular Weight	Protein Mw: 32kDa Observed Mw: 90-100kDa/180-230kDa
Storage Instruction	Store at -20°C for up to 1 year from the date of receipt, and avoid repeat freeze-thaw cycles.

TARGET INFORMATION

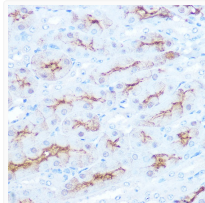
Gene ID	6382
Gene Symbol	SDC1
UniProt ID	SDC1_HUMAN
Immunogen Region	23-254
Immunogen Sequence	QIVATNLPPELDQDGSDDSD NFGSGAGALQDITLSQQTP STWKDTQLLTAIPTSPEPTG LEATAASTSTLPAGEGPKEG EAVVLPVEVEPLTAREQEAT PRPRETTQLPTTHLASTTTA TTAQEPATSHPHRDMQPGHH ETSTPAGPSQADLHTPHTED GGPSATERAAEDGASSQLPA AEGSGEQDFTFETSGENTAV VAVEPDRRNQSPVDQAGTGA SQGLLDRKEVLG
Specificity	Recombinant fusion protein containing a sequence corresponding to amino acids 23-254 of human Syndecan 1 (P18827).

ADDITIONAL INFORMATION

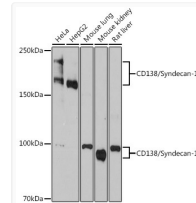
Note STRICTLY FOR FURTHER SCIENTIFIC RESEARCH USE ONLY (RUO). MUST NOT TO BE USED IN DIAGNOSTIC OR THERAPEUTIC APPLICATIONS.



Confocal imaging of human tonsil using CD138/Syndecan-1 Rabbit monoclonal antibody (STJ11102010, dilution 1:100) (Red). DAPI was used for nuclear staining (blue). Objective: 40x. Perform high pressure antigen retrieval with 10 mM citrate buffer pH 6. 0 before commencing with IF staining protocol.



Immunohistochemistry analysis of paraffin-embedded mouse kidney using CD138/Syndecan-1 Rabbit monoclonal antibody (STJ11102010) at dilution of 1:100 (40x lens). Perform microwave antigen retrieval with 10 mM PBS buffer pH 7. 2 before commencing with immunohistochemistry staining protocol.



Western blot analysis of extracts from various cell lines, using Syndecan 1 Rabbit monoclonal antibody (STJ11102010) at 1:1000 dilution. Secondary antibody: HRP Goat Anti-Rabbit IgG (H+L) (STJS000856) at 1:10000 dilution. Lysates/proteins: 25 Mu g per lane. Blocking buffer: 3% nonfat dry milk in TBST. Detection: ECL Basic Kit. Exposure time: 90s.