

## Anti-RBPJ antibody (100-200) [S2MR] (STJ11101992)

### GENERAL INFORMATION

Product Type	Primary antibodies
Applications	WB/IHC-P/ELISA
Host / Source	Rabbit
Reactivity	Human/Mouse

### PRODUCT PROPERTIES

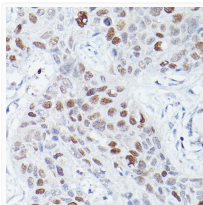
Clonality	Monoclonal
Concentration	Lot specific
Conjugation	Unconjugated
Purification	Affinity purification
Dilution Range	WB:1:1000-1:6000 IHC-P:1:100-1:500 ELISA:Recommended starting concentration is 1 $\mu$ g/mL. Please optimize the concentration based on your specific assay requirements.
Formulation	PBS with 0.02% Sodium Azide, 0.05% BSA, 50% Glycerol, pH 7.3.
Isotype	IgG
Molecular Weight	Protein Mw: 56kDa Observed Mw: 67kDa
Storage Instruction	Store at -20°C for up to 1 year from the date of receipt, and avoid repeat freeze-thaw cycles.

### TARGET INFORMATION

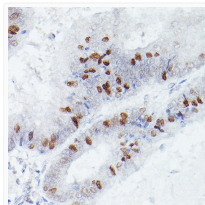
Gene ID	<a href="#">3516</a>
Gene Symbol	<a href="#">RBPJ</a>
UniProt ID	<a href="#">SUH_HUMAN</a>
Immunogen Region	100-200
Immunogen Sequence	CAFIGIGNSDQEMQQLNLEG KNYCTAKTLYISDSDKRKHFLSVKMFYGNSSDDIGVFLSK RIKVISKPSKKKQSLKNADL CIASGTKVALFNRLRSQTVS T
Specificity	A synthetic peptide corresponding to a sequence within amino acids 100-200 of human RBPJK (Q06330).

### ADDITIONAL INFORMATION

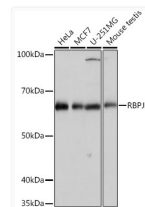
Note STRICTLY FOR FURTHER SCIENTIFIC RESEARCH USE ONLY (RUO). MUST NOT TO BE USED IN DIAGNOSTIC OR THERAPEUTIC APPLICATIONS.



Immunohistochemistry analysis of RBPJK in paraffin-embedded human lung squamous carcinoma tissue using RBPJK Rabbit monoclonal antibody (STJ11101992) at dilution of 1:50 (40x lens). Perform high pressure antigen retrieval with 10 mM citrate buffer pH 6.0 before commencing with immunohistochemistry staining protocol.



Immunohistochemistry analysis of RBPJK in paraffin-embedded human colon carcinoma using RBPJK Rabbit monoclonal antibody (STJ11101992) at dilution of 1:50 (40x lens). Perform high pressure antigen retrieval with 10 mM citrate buffer pH 6.0 before commencing with immunohistochemistry staining protocol.



Western blot analysis of various lysates using RBPJK Rabbit monoclonal antibody (STJ11101992) at 1:1000 dilution. Secondary antibody: HRP Goat Anti-Rabbit IgG (H+L) (STJS000856) at 1:10000 dilution. Lysates/proteins: 25  $\mu$ g per lane. Blocking buffer: 3% nonfat dry milk in TBST. Detection: ECL Basic Kit. Exposure time: 10s.