

Anti-MYH11 antibody (1160-1313) [S8MR] (STJ11101988)
GENERAL INFORMATION

Product Type	Primary antibodies
Applications	WB/IHC-P/IF/ICC/ELISA
Host / Source	Rabbit
Reactivity	Human/Mouse/Rat

PRODUCT PROPERTIES

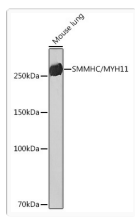
Clonality	Monoclonal
Concentration	Lot specific
Conjugation	Unconjugated
Purification	Affinity purification
Dilution Range	WB:1:500-1:1000 IHC-P:1:500-1:5000 IF/ICC:1:400-1:1600 ELISA:Recommended starting concentration is 1 µg/mL. Please optimize the concentration based on your specific assay requirements.
Formulation	PBS with 0.05% Proclin300, 0.05% BSA, 50% Glycerol, pH 7.3.
Isotype	IgG
Molecular Weight	Protein Mw: 227kDa Observed Mw: 250kDa
Storage Instruction	Store at -20°C for up to 1 year from the date of receipt, and avoid repeat freeze-thaw cycles.

TARGET INFORMATION

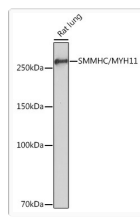
Gene ID	4629
Gene Symbol	MYH11
UniProt ID	MYH11_HUMAN
Immunogen Region	1160-1313
Immunogen Sequence	DSTATQQELRAKREQEVTVL KKALDEETRSHEAQVQEMRQ KHAQAVEELTEQLEQFKRAK ANLDKNKQTLKENADLAGE LRVLGQAKQVEVHKKKLEA QVQELQSKCSDGERARAELN DKVHKLQNEVESVTGMLNEA EGKAIKLAQDVASL
Specificity	Recombinant fusion protein containing a sequence corresponding to amino acids 1160-1313 of human SMMHC/MYH11 (NP_002465.1).

ADDITIONAL INFORMATION

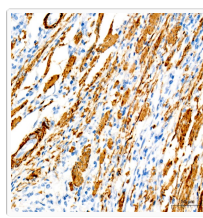
Note	STRICTLY FOR FURTHER SCIENTIFIC RESEARCH USE ONLY (RUO). MUST NOT TO BE USED IN DIAGNOSTIC OR THERAPEUTIC APPLICATIONS.
------	---



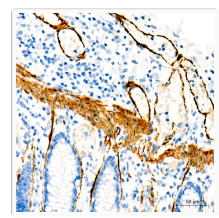
Western blot analysis of extracts of mouse lung, using SMMHC/SMMHC/MYH11 rabbit monoclonal antibody (STJ11101988) at 1:1000 dilution. Secondary antibody: HRP Goat Anti-rabbit IgG (H+L) (STJS000856) at 1:10000 dilution. Lysates/proteins: 25 μ g per lane. Blocking buffer: 3% non-fat dry milk in TBST. Detection: ECL Basic Kit. Exposure time: 3min.



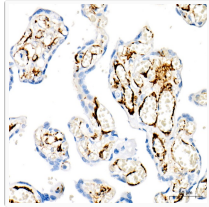
Western blot analysis of extracts of Rat lung, using SMMHC/SMMHC/MYH11 rabbit monoclonal antibody (STJ11101988) at 1:1000 dilution. Secondary antibody: HRP Goat Anti-rabbit IgG (H+L) (STJS000856) at 1:10000 dilution. Lysates/proteins: 25 μ g per lane. Blocking buffer: 3% non-fat dry milk in TBST. Detection: ECL Enhanced Kit. Exposure time: 3min.



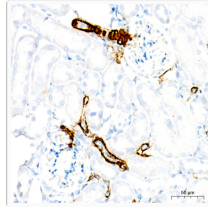
Immunohistochemistry analysis of paraffin-embedded human colon carcinoma using SMMHC/MYH11 rabbit monoclonal antibody (STJ11101988) at dilution of 1:8000 (40x lens). Perform high pressure antigen retrieval with 10 mM citrate buffer pH 6.0 before commencing with immunohistochemistry staining protocol.



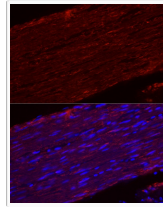
Immunohistochemistry analysis of paraffin-embedded human colon using SMMHC/MYH11 rabbit monoclonal antibody (STJ11101988) at dilution of 1:8000 (40x lens). Perform high pressure antigen retrieval with 10 mM citrate buffer pH 6.0 before commencing with immunohistochemistry staining protocol.



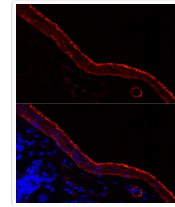
Immunohistochemistry analysis of paraffin-embedded human placenta using SMMHC/MYH11 rabbit monoclonal antibody (STJ11101988) at dilution of 1:8000 (40x lens). Perform high pressure antigen retrieval with 10 mM citrate buffer pH 6.0 before commencing with immunohistochemistry staining protocol.



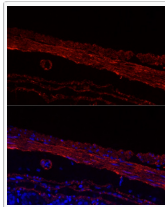
Immunohistochemistry analysis of paraffin-embedded mouse kidney using SMMHC/MYH11 rabbit monoclonal antibody (STJ11101988) at dilution of 1:8000 (40x lens). Perform high pressure antigen retrieval with 10 mM citrate buffer pH 6.0 before commencing with immunohistochemistry staining protocol.



Immunofluorescence analysis of human colon using SMMHC/MYH11 rabbit monoclonal antibody (STJ11101988) at dilution of 1:100 (40x lens). Blue: DAPI for nuclear staining.



Immunofluorescence analysis of mouse colon using SMMHC/MYH11 rabbit monoclonal antibody (STJ11101988) at dilution of 1:100 (40x lens). Blue: DAPI for nuclear staining.



Immunofluorescence analysis of rat colon using SMMHC/MYH11 rabbit monoclonal antibody (STJ11101988) at dilution of 1:100 (40x lens). Blue: DAPI for nuclear staining.