

## Anti-TXN antibody (26-105) [S4MR] (STJ11101984)

### GENERAL INFORMATION

Product Type	Primary antibodies
Applications	WB/IHC-P/ELISA
Host / Source	Rabbit
Reactivity	Human/Mouse/Rat

### PRODUCT PROPERTIES

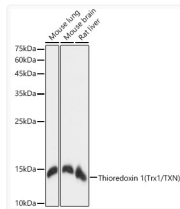
Clonality	Monoclonal
Concentration	Lot specific
Conjugation	Unconjugated
Purification	Affinity purification
Dilution Range	WB:1:1000-1:6000 IHC-P:1:2000-1:8000 ELISA:Recommended starting concentration is 1 Mu g/mL. Please optimize the concentration based on your specific assay requirements.
Formulation	PBS with 0.02% Sodium Azide, 0.05% BSA, 50% Glycerol, pH 7.3.
Isotype	IgG
Molecular Weight	Protein Mw: 12kDa Observed Mw: 14kDa
Storage Instruction	Store at -20°C for up to 1 year from the date of receipt, and avoid repeat freeze-thaw cycles.

### TARGET INFORMATION

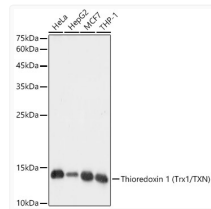
Gene ID	<a href="#">7295</a>
Gene Symbol	<a href="#">TXN</a>
UniProt ID	<a href="#">THIO_HUMAN</a>
Immunogen Region	26-105
Immunogen Sequence	DFSATWCGPCKMIKPFHSL SEKYSNVIFLEVDVDDCQDV ASECEVKCMPTFQFFKKGQK VGEFSGANKEKLEATINELV
Specificity	A synthetic peptide corresponding to a sequence within amino acids 26-105 of human Thioredoxin 1 (Trx1/TXN) (P10599).

### ADDITIONAL INFORMATION

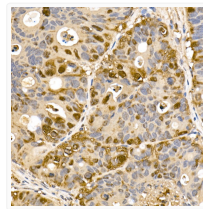
Note STRICTLY FOR FURTHER SCIENTIFIC RESEARCH USE ONLY (RUO). MUST NOT TO BE USED IN DIAGNOSTIC OR THERAPEUTIC APPLICATIONS.



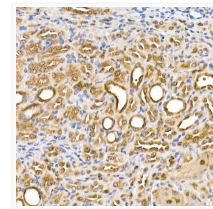
Western blot analysis of various lysates, using Thioredoxin 1 (Trx1/TXN) rabbit monoclonal antibody (STJ11101984) at 1:1000 dilution. Secondary antibody: HRP Goat Anti-rabbit IgG (H+L) (STJS000856) at 1:10000 dilution. Lysates/proteins: 25 Mu g per lane. Blocking buffer: 3% non-fat dry milk in TBST. Detection: ECL Basic Kit. Exposure time: 1s.



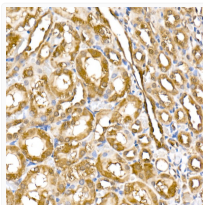
Western blot analysis of various lysates, using Thioredoxin 1 (Trx1/TXN) rabbit monoclonal antibody (STJ11101984) at 1:1000 dilution. Secondary antibody: HRP Goat Anti-rabbit IgG (H+L) (STJS000856) at 1:10000 dilution. Lysates/proteins: 25 Mu g per lane. Blocking buffer: 3% non-fat dry milk in TBST. Detection: ECL Basic Kit. Exposure time: 10s.



Immunohistochemistry analysis of paraffin-embedded human colon carcinoma using Thioredoxin 1 (Trx1/TXN) rabbit monoclonal antibody (STJ11101984) at dilution of 1:100 (40x lens). Perform microwave antigen retrieval with 10 mM PBS buffer pH 7.2 before commencing with immunohistochemistry staining protocol.



Immunohistochemistry analysis of paraffin-embedded mouse kidney using Thioredoxin 1 (Trx1/TXN) rabbit monoclonal antibody (STJ11101984) at dilution of 1:100 (40x lens). Perform microwave antigen retrieval with 10 mM PBS buffer pH 7.2 before commencing with immunohistochemistry staining protocol.



Immunohistochemistry analysis of paraffin-embedded rat kidney using Thioredoxin 1 (Trx1/TXN) rabbit monoclonal antibody (STJ11101984) at dilution of 1:100 (40x lens). Perform microwave antigen retrieval with 10 mM PBS buffer pH 7.2 before commencing with immunohistochemistry staining protocol.