

Anti-MOG antibody (1-100) [S1MR] (STJ11101981)

GENERAL INFORMATION

Product Type	Primary antibodies
Applications	WB/IF/ICC/ELISA
Host / Source	Rabbit
Reactivity	Mouse/Rat

PRODUCT PROPERTIES

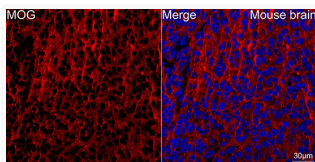
Clonality	Monoclonal
Concentration	Lot specific
Conjugation	Unconjugated
Purification	Affinity purification
Dilution Range	WB:1:1000-1:6000 IF/CC:1:50-1:200 ELISA:Recommended starting concentration is 1 μ g/mL. Please optimize the concentration based on your specific assay requirements.
Formulation	PBS with 0.02% Sodium Azide, 0.05% BSA, 50% Glycerol, pH 7.3.
Isotype	IgG
Molecular Weight	Protein Mw: 28kDa Observed Mw: 28kDa
Storage Instruction	Store at -20°C for up to 1 year from the date of receipt, and avoid repeat freeze-thaw cycles.

TARGET INFORMATION

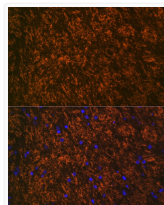
Gene ID	4340
Gene Symbol	MOG
UniProt ID	MOG_HUMAN
Immunogen Region	1-100
Immunogen Sequence	MASLSRPSLPCLCSFLLLL LLQVSSSYAGQFRVIGPRHP IRALVGDEVELPCRISPGKN ATGMEVGWYRPPFSRVVHLY RNGKDQDGDQAPEYRGRTEL
Specificity	A synthetic peptide corresponding to a sequence within amino acids 1-100 of human Myelin oligodendrocyte glycoprotein (NP_996532.2).

ADDITIONAL INFORMATION

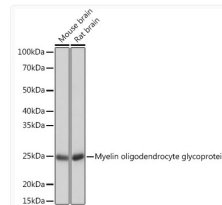
Note STRICTLY FOR FURTHER SCIENTIFIC RESEARCH USE ONLY (RUO). MUST NOT TO BE USED IN DIAGNOSTIC OR THERAPEUTIC APPLICATIONS.



Confocal imaging of frozen sections of paraffin-embedded Mouse brain using Myelin oligodendrocyte glycoprotein Rabbit monoclonal antibody (STJ11101981, dilution 1:100) followed by incubation with Cy3 Goat Anti-Rabbit IgG (H+L) (dilution 1:500) (Red). DAPI was used for nuclear staining (Blue). Objective: 40x. Perform high pressure antigen retrieval with 0.01M citrate buffer (pH 6.0) prior to IF staining.



Immunofluorescence analysis of paraffin-embedded rat brain using Myelin oligodendrocyte glycoprotein Rabbit monoclonal antibody (STJ11101981) at dilution of 1:100 (40x lens). Secondary antibody: Cy3 Goat Anti-Rabbit IgG (H+L) at 1:500 dilution. Blue: DAPI for nuclear staining.



Western blot analysis of various lysates using Myelin oligodendrocyte glycoprotein Rabbit monoclonal antibody (STJ11101981) at 1:1000 dilution. Secondary antibody: HRP Goat Anti-Rabbit IgG (H+L) (STJS000856) at 1:10000 dilution. Lysates/proteins: 25 μ g per lane. Blocking buffer: 3% nonfat dry milk in TBST. Detection: ECL Basic Kit. Exposure time: 10s.