

Anti-KHDRBS1 antibody (1-100) [S3MR] (STJ11101963)

GENERAL INFORMATION

| | |
|---------------|-----------------------|
| Product Type | Primary antibodies |
| Applications | WB/IHC-P/IF/ICC/ELISA |
| Host / Source | Rabbit |
| Reactivity | Human/Mouse/Rat |

PRODUCT PROPERTIES

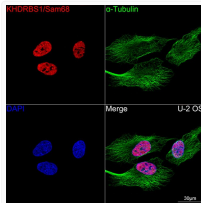
| | |
|---------------------|---|
| Clonality | Monoclonal |
| Concentration | Lot specific |
| Conjugation | Unconjugated |
| Purification | Affinity purification |
| Dilution Range | WB:1:500-1:2000 IHC-P:1:50-1:200 IF/ICC:1:50-1:200 ELISA:Recommended starting concentration is 1 Mu g/mL. Please optimize the concentration based on your specific assay requirements. |
| Formulation | PBS with 0.02% Sodium Azide, 0.05% BSA, 50% Glycerol, pH 7.3. |
| Isotype | IgG |
| Molecular Weight | Protein Mw: 48kDa Observed Mw: 68kDa |
| Storage Instruction | Store at -20°C for up to 1 year from the date of receipt, and avoid repeat freeze-thaw cycles. |

TARGET INFORMATION

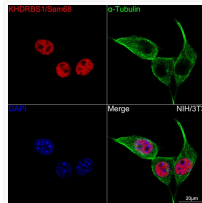
| | |
|--------------------|---|
| Gene ID | 10657 |
| Gene Symbol | KHDRBS1 |
| UniProt ID | KHDR1_HUMAN |
| Immunogen Region | 1-100 |
| Immunogen Sequence | MQRDDPAARMRSRSGRSGS MDPGSAHPSVRQTPSRQPPL PHRSRGGGGSRGGARASPA TQPPPLPPSATGPDATVGG PAPTLLPPSATASVKMEPE |
| Specificity | A synthetic peptide corresponding to a sequence within amino acids 1-100 of human KHDRBS1 (Q07666). |

ADDITIONAL INFORMATION

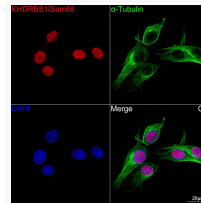
Note STRICTLY FOR FURTHER SCIENTIFIC RESEARCH USE ONLY (RUO). MUST NOT TO BE USED IN DIAGNOSTIC OR THERAPEUTIC APPLICATIONS.



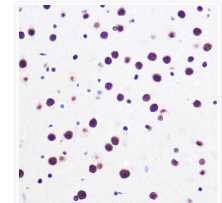
Confocal imaging of U-2 OS cells using KHDRBS1/Sam68 Rabbit monoclonal antibody (STJ11101963, at dilution of 1:100) (Red). The cells were counterstained with Alpha-Tubulin Mouse monoclonal antibody (dilution 1:400) (Green). DAPI was used for nuclear staining (blue). Objective: 100x.



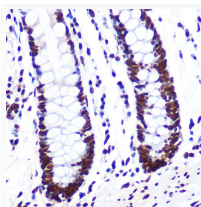
Confocal imaging of NIH/3T3 cells using KHDRBS1/Sam68 Rabbit monoclonal antibody (STJ11101963, at dilution of 1:100) (Red). The cells were counterstained with Alpha-Tubulin Mouse monoclonal antibody (dilution 1:400) (Green). DAPI was used for nuclear staining (blue). Objective: 100x.



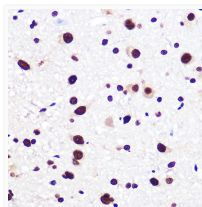
Confocal imaging of C6 cells using KHDRBS1/Sam68 Rabbit monoclonal antibody (STJ11101963, at dilution of 1:100) (Red). The cells were counterstained with Alpha-Tubulin Mouse monoclonal antibody (dilution 1:400) (Green). DAPI was used for nuclear staining (blue). Objective: 100x.



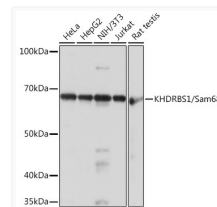
Immunohistochemistry analysis of paraffin-embedded mouse brain using KHDRBS1/KHDRBS1/Sam68 Rabbit monoclonal antibody (STJ11101963) at dilution of 1:100 (40x lens). Perform microwave antigen retrieval with 10 mM PBS buffer pH 7.2 before commencing with immunohistochemistry staining protocol.



Immunohistochemistry analysis of paraffin-embedded human colon using KHDRBS1/KHDRBS1/Sam68 Rabbit monoclonal antibody (STJ11101963) at dilution of 1:100 (40x lens). Perform microwave antigen retrieval with 10 mM PBS buffer pH 7.2 before commencing with immunohistochemistry staining protocol.



Immunohistochemistry analysis of paraffin-embedded rat brain using KHDRBS1/KHDRBS1/Sam68 Rabbit monoclonal antibody (STJ11101963) at dilution of 1:100 (40x lens). Perform microwave antigen retrieval with 10 mM PBS buffer pH 7.2 before commencing with immunohistochemistry staining protocol.



Western blot analysis of extracts of various cell lines, using KHDRBS1/KHDRBS1/Sam68 Rabbit monoclonal antibody (STJ11101963) at 1:1000 dilution. Secondary antibody: HRP Goat Anti-Rabbit IgG (H+L) (STJS000856) at 1:10000 dilution. Lysates/proteins: 25 Mu g per lane. Blocking buffer: 3% nonfat dry milk in TBST. Detection: ECL Basic Kit. Exposure time: 1s.