

Anti-MT-CO2 antibody (128-227) [S8MR] (STJ11101958)

GENERAL INFORMATION

Product Type	Primary antibodies
Applications	WB/IHC-P/IF/ICC/ELISA
Host / Source	Rabbit
Reactivity	Human

PRODUCT PROPERTIES

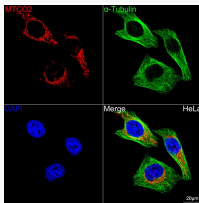
Clonality	Monoclonal
Concentration	Lot specific
Conjugation	Unconjugated
Purification	Affinity purification
Dilution Range	WB:1:1000-1:6000 IHC-P:1:200-1:800 IF/CC:1:200-1:800 ELISA:Recommended starting concentration is 1 Mu g/mL. Please optimize the concentration based on your specific assay requirements.
Formulation	PBS with 0.02% Sodium Azide, 0.05% BSA, 50% Glycerol, pH 7.3.
Isotype	IgG
Molecular Weight	Protein Mw: 26kDa Observed Mw: 19kDa
Storage Instruction	Store at -20°C for up to 1 year from the date of receipt, and avoid repeat freeze-thaw cycles.

TARGET INFORMATION

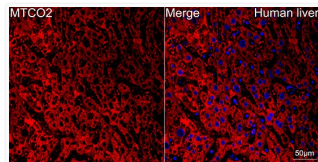
Gene ID	4513
Gene Symbol	MT-CO2
UniProt ID	COX2_HUMAN
Immunogen Region	128-227
Immunogen Sequence	LEPGDLRLLDVNRVLPPIE APIRMMITSQDVLHSHWAVPT LGLKTD AIPGRLNQTTFTAT RPGVYYGQCSEICGANHSFM PIVLELIPLKIFEMGPVFTL
Specificity	A synthetic peptide corresponding to a sequence within amino acids 128-227 of human MTCO2 (P00403).

ADDITIONAL INFORMATION

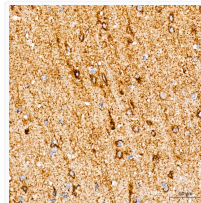
Note STRICTLY FOR FURTHER SCIENTIFIC RESEARCH USE ONLY (RUO). MUST NOT TO BE USED IN DIAGNOSTIC OR THERAPEUTIC APPLICATIONS.



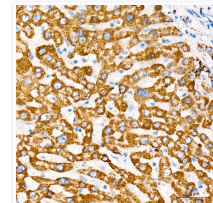
Confocal imaging of HeLa cells using MTCO2 Rabbit monoclonal antibody (STJ11101958, dilution 1:200) followed by a further incubation with Cy3 Goat Anti-Rabbit IgG (H+L) (dilution 1:500) (Red). The cells were counterstained with Alpha-Tubulin Mouse monoclonal antibody (dilution 1:400) followed by incubation with ABflo® 488-conjugated Goat Anti-Mouse IgG (H+L) antibody (dilution 1:500) (Green). DAPI was used for nuclear staining (Blue). Objective: 100x.



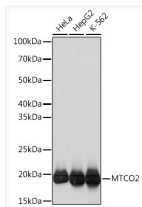
Confocal imaging of paraffin-embedded Human liver tissue using MTCO2 Rabbit monoclonal antibody (STJ11101958, dilution 1:200) followed by a further incubation with Cy3 Goat Anti-Rabbit IgG (H+L) (dilution 1:500) (Red). DAPI was used for nuclear staining (Blue). Objective: 40x. Perform high pressure antigen retrieval with 0. 01 M citrate buffer (pH 6. 0) prior to IF staining.



Immunohistochemistry analysis of MTCO2 in paraffin-embedded human brain tissue using MTCO2 Rabbit monoclonal antibody (STJ11101958) at a dilution of 1:200 (40x lens). High pressure antigen retrieval was performed with 0. 01 M citrate buffer (pH 6. 0) prior to immunohistochemistry staining.



Immunohistochemistry analysis of MTCO2 in paraffin-embedded human liver tissue using MTCO2 Rabbit monoclonal antibody (STJ11101958) at a dilution of 1:200 (40x lens). High pressure antigen retrieval was performed with 0. 01 M citrate buffer (pH 6. 0) prior to immunohistochemistry staining.



Western blot analysis of various lysates using MTCO2 Rabbit monoclonal antibody (STJ11101958) at 1:1000 dilution. Secondary antibody: HRP Goat Anti-Rabbit IgG (H+L) (STJS000856) at 1:10000 dilution. Lysates/proteins: 25 Mu g per lane. Blocking buffer: 3% nonfat dry milk in TBST. Detection: ECL Basic Kit. Exposure time: 3s.