

Anti-NONO antibody (372-471) [S2MR] (STJ11101952)

GENERAL INFORMATION

Product Type	Primary antibodies
Applications	WB/IHC-P/IF/ICC/ELISA
Host / Source	Rabbit
Reactivity	Human/Mouse/Rat

PRODUCT PROPERTIES

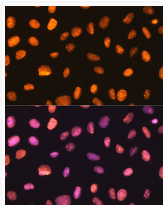
Clonality	Monoclonal
Concentration	Lot specific
Conjugation	Unconjugated
Purification	Affinity purification
Dilution Range	WB:1:500-1:1000 IHC-P:1:500-1:2000 IF/CC:1:100-1:1000 ELISA:Recommended starting concentration is 1 Mu g/mL. Please optimize the concentration based on your specific assay requirements.
Formulation	PBS with 0.02% Sodium Azide, 0.05% BSA, 50% Glycerol, pH 7.3.
Isotype	IgG
Molecular Weight	Protein Mw: 54kDa Observed Mw: 60kDa
Storage Instruction	Store at -20°C for up to 1 year from the date of receipt, and avoid repeat freeze-thaw cycles.

TARGET INFORMATION

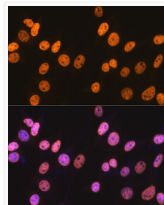
Gene ID	4841
Gene Symbol	NONO
UniProt ID	NONO_HUMAN
Immunogen Region	372-471
Immunogen Sequence	GTFPDAREQEIRMGQMAMGG AMGINNRGAMPPAPVPAGTP APPGPATMMPDGLTGLTPPT TERFGQAATMEGIGAIGGTP PAFNRAAPGAEFAPNKRRRY
Specificity	A synthetic peptide corresponding to a sequence within amino acids 372-471 of human NONO/p54nrb (Q15233).

ADDITIONAL INFORMATION

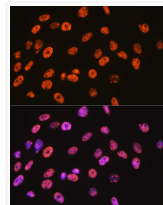
Note **STRICTLY FOR FURTHER SCIENTIFIC RESEARCH USE ONLY (RUO). MUST NOT TO BE USED IN DIAGNOSTIC OR THERAPEUTIC APPLICATIONS.**



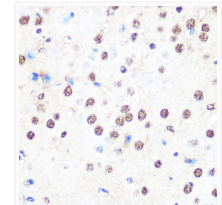
Immunofluorescence analysis of U-2 OS cells using NONO/p54nrb Rabbit monoclonal antibody (STJ11101952) at dilution of 1:100 (40x lens). Blue: DAPI for nuclear staining.



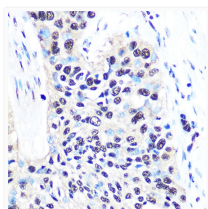
Immunofluorescence analysis of NIH-3T3 cells using NONO/p54nrb Rabbit monoclonal antibody (STJ11101952) at dilution of 1:100 (40x lens). Blue: DAPI for nuclear staining.



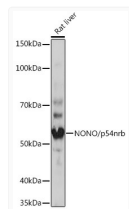
Immunofluorescence analysis of C6 cells using NONO/p54nrb Rabbit monoclonal antibody (STJ11101952) at dilution of 1:100 (40x lens). Blue: DAPI for nuclear staining.



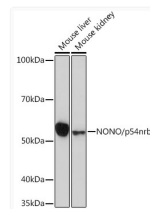
Immunohistochemistry analysis of paraffin-embedded mouse brain using NONO/p54nrb Rabbit monoclonal antibody (STJ11101952) at dilution of 1:100 (40x lens). Perform microwave antigen retrieval with 10 mM PBS buffer pH 7.2 before commencing with immunohistochemistry staining protocol.



Immunohistochemistry analysis of paraffin-embedded human esophageal cancer using NONO/p54nrb Rabbit monoclonal antibody (STJ11101952) at dilution of 1:100 (40x lens). Perform microwave antigen retrieval with 10 mM PBS buffer pH 7.2 before commencing with immunohistochemistry staining protocol.



Western blot analysis of extracts of Rat liver, using NONO/p54nrb Rabbit monoclonal antibody (STJ11101952) at 1:1000 dilution. Secondary antibody: HRP Goat Anti-Rabbit IgG (H+L) (STJS000856) at 1:10000 dilution. Lysates/proteins: 25 Mu g per lane. Blocking buffer: 3% nonfat dry milk in TBST. Detection: ECL Basic Kit. Exposure time: 3min.



Western blot analysis of extracts of various cell lines, using NONO/p54nrb Rabbit monoclonal antibody (STJ11101952) at 1:1000 dilution. Secondary antibody: HRP Goat Anti-Rabbit IgG (H+L) (STJS000856) at 1:10000 dilution. Lysates/proteins: 25 Mu g per lane. Blocking buffer: 3% nonfat dry milk in TBST. Detection: ECL Basic Kit. Exposure time: 3min.