

## Anti-BBC3 antibody (100-193) [S5MR] (STJ11101945)

### GENERAL INFORMATION

Product Type	Primary antibodies
Applications	WB/IHC-P/IF/ICC/ELISA
Host / Source	Rabbit
Reactivity	Human/Mouse/Rat

### PRODUCT PROPERTIES

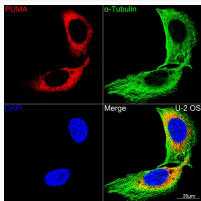
Clonality	Monoclonal
Concentration	Lot specific
Conjugation	Unconjugated
Purification	Affinity purification
Dilution Range	WB:1:1000-1:4000 IHC-P:1:100-1:1000 IF/ICC:1:100-1:1000 ELISA:Recommended starting concentration is 1 Mu g/mL. Please optimize the concentration based on your specific assay requirements.
Formulation	PBS with 0.02% Sodium Azide, 0.05% BSA, 50% Glycerol, pH 7.3.
Isotype	IgG
Molecular Weight	Protein Mw: 18kDa Observed Mw: 18kDa/23kDa
Storage Instruction	Store at -20°C for up to 1 year from the date of receipt, and avoid repeat freeze-thaw cycles.

### TARGET INFORMATION

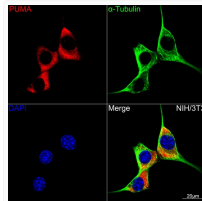
Gene ID	<a href="#">27113</a> <a href="#">27113</a>
Gene Symbol	<a href="#">BBC3</a> <a href="#">BBC3</a>
UniProt ID	<a href="#">BBC3B_HUMAN</a> <a href="#">BBC3_HUMAN</a>
Immunogen Region	100-193
Immunogen Sequence	AEQHLESVPVSPAGALAGGP TQAAPGVRGEEEQWAREIGA QLRRMADDLNAQYERRRQEE QQRHRPSPWRVLYNLIMGLL PLPRGHRAPMEPN
Specificity	A synthetic peptide corresponding to a sequence within amino acids 100-193 of human PUMA (NP_055232.1)

### ADDITIONAL INFORMATION

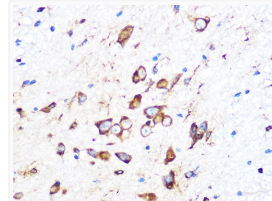
Note STRICTLY FOR FURTHER SCIENTIFIC RESEARCH USE ONLY (RUO). MUST NOT TO BE USED IN DIAGNOSTIC OR THERAPEUTIC APPLICATIONS.



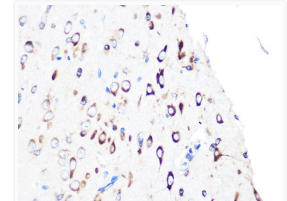
Confocal imaging of U-2 OS cells using PUMA Rabbit monoclonal antibody (STJ11101945, dilution 1:100) (Red). The cells were counterstained with Alpha-Tubulin Mouse monoclonal antibody (dilution 1:400) (Green). DAPI was used for nuclear staining (blue). Objective: 100x.



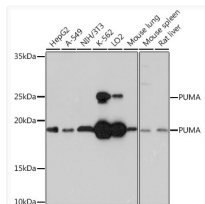
Confocal imaging of NIH/3T3 cells using PUMA Rabbit monoclonal antibody (STJ11101945, dilution 1:100) (Red). The cells were counterstained with Alpha-Tubulin Mouse monoclonal antibody (dilution 1:400) (Green). DAPI was used for nuclear staining (blue). Objective: 100x.



Immunohistochemistry analysis of PUMA in paraffin-embedded mouse spinal cord using PUMA Rabbit monoclonal antibody (STJ11101945) at dilution of 1:100 (40x lens). Perform microwave antigen retrieval with 10 mM PBS buffer pH 7. 2 before commencing with immunohistochemistry staining protocol.



Immunohistochemistry analysis of PUMA in paraffin-embedded rat brain using PUMA Rabbit monoclonal antibody (STJ11101945) at dilution of 1:100 (40x lens). Perform microwave antigen retrieval with 10 mM PBS buffer pH 7. 2 before commencing with immunohistochemistry staining protocol.



Western blot analysis of various lysates using PUMA Rabbit monoclonal antibody (STJ11101945) at 1:1000 dilution. Secondary antibody: HRP Goat Anti-Rabbit IgG (H+L) (STJS000856) at 1:10000 dilution. Lysates/proteins: 25 Mu g per lane. Blocking buffer: 3% nonfat dry milk in TBST. Detection: ECL Basic Kit. Exposure time: 30s.