

Anti-CBX5 antibody (92-191) [S4MR] (STJ11101944)

GENERAL INFORMATION

Product Type	Primary antibodies
Applications	WB/IHC-P/IF/ICC/IP/ELISA
Host / Source	Rabbit
Reactivity	Human/Mouse/Rat

PRODUCT PROPERTIES

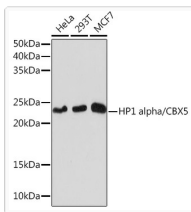
Clonality	Monoclonal
Concentration	Lot specific
Conjugation	Unconjugated
Purification	Affinity purification
Dilution Range	WB:1:1000-1:4000 IHC-P:1:200-1:2000 IF/CC:1:200-1:800 IP:0.5 µg-4 µg antibody for 200 µg-400 µg extracts of whole cells ELISA:Recommended starting concentration is 1 µg/mL. Please optimize the concentration based on your sp
Formulation	PBS with 0.02% Sodium Azide, 0.05% BSA, 50% Glycerol, pH 7.3.
Isotype	IgG
Molecular Weight	Protein Mw: 22kDa Observed Mw: 22kDa
Storage Instruction	Store at-20°C for up to 1 year from the date of receipt, and avoid repeat freeze-thaw cycles.

TARGET INFORMATION

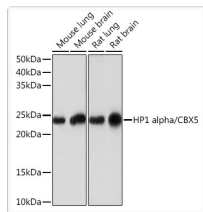
Gene ID	23468
Gene Symbol	CBX5
UniProt ID	CBX5_HUMAN
Immunogen Region	92-191
Immunogen Sequence	SNFSNSADDIKSKKKREQSN DIARGFERGLEPEKIIGATD SCGDLMLMKWKDTEADLV LAKEANVKCPQIVIAFYEER LTWHAYPEDAENKEKETAKS
Specificity	A synthetic peptide corresponding to a sequence within amino acids 92-191 of human HP1 alpha/CBX5 (P45973).

ADDITIONAL INFORMATION

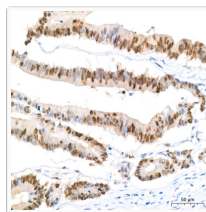
Note	STRICTLY FOR FURTHER SCIENTIFIC RESEARCH USE ONLY (RUO). MUST NOT TO BE USED IN DIAGNOSTIC OR THERAPEUTIC APPLICATIONS.
------	---



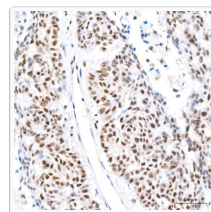
Western blot analysis of extracts of various cell lines, using HP1 alpha/CBX5 rabbit monoclonal antibody (STJ11101944) at 1:1000 dilution. Secondary antibody: HRP Goat Anti-rabbit IgG (H+L) (STJS000856) at 1:10000 dilution. Lysates/proteins: 25 Mu g per lane. Blocking buffer: 3% non-fat dry milk in TBST. Detection: ECL Basic Kit. Exposure time: 10s.



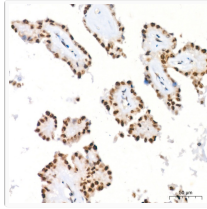
Western blot analysis of extracts of various cell lines, using HP1 alpha/CBX5 rabbit monoclonal antibody (STJ11101944) at 1:1000 dilution. Secondary antibody: HRP Goat Anti-rabbit IgG (H+L) (STJS000856) at 1:10000 dilution. Lysates/proteins: 25 Mu g per lane. Blocking buffer: 3% non-fat dry milk in TBST. Detection: ECL Basic Kit. Exposure time: 3min.



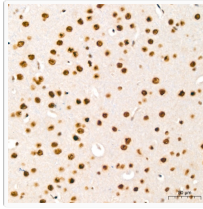
Immunohistochemistry analysis of HP1 alpha/CBX5 in paraffin-embedded human colon carcinoma tissue using HP1 alpha/CBX5 rabbit monoclonal antibody (STJ11101944) at a dilution of 1:200 (40x lens). High pressure antigen retrieval was performed with 0.01 M citrate buffer (pH 6.0) prior to immunohistochemistry staining.



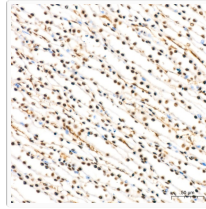
Immunohistochemistry analysis of HP1 alpha/CBX5 in paraffin-embedded human lung cancer tissue using HP1 alpha/CBX5 rabbit monoclonal antibody (STJ11101944) at a dilution of 1:200 (40x lens). High pressure antigen retrieval was performed with 0.01 M citrate buffer (pH 6.0) prior to immunohistochemistry staining.



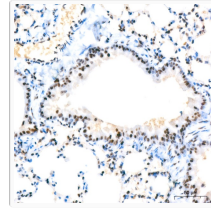
Immunohistochemistry analysis of HP1 alpha/CBX5 in paraffin-embedded human thyroid cancer tissue using HP1 alpha/CBX5 rabbit monoclonal antibody (STJ11101944) at a dilution of 1:200 (40x lens). High pressure antigen retrieval was performed with 0.01 M citrate buffer (pH 6.0) prior to immunohistochemistry staining.



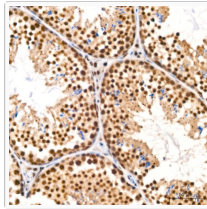
Immunohistochemistry analysis of HP1 alpha/CBX5 in paraffin-embedded mouse brain tissue using HP1 alpha/CBX5 rabbit monoclonal antibody (STJ11101944) at a dilution of 1:200 (40x lens). High pressure antigen retrieval was performed with 0.01 M citrate buffer (pH 6.0) prior to immunohistochemistry staining.



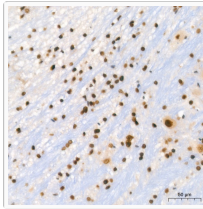
Immunohistochemistry analysis of HP1 alpha/CBX5 in paraffin-embedded mouse kidney tissue using HP1 alpha/CBX5 rabbit monoclonal antibody (STJ11101944) at a dilution of 1:200 (40x lens). High pressure antigen retrieval was performed with 0.01 M citrate buffer (pH 6.0) prior to immunohistochemistry staining.



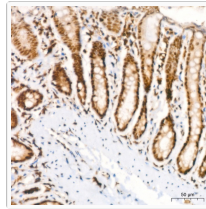
Immunohistochemistry analysis of HP1 alpha/CBX5 in paraffin-embedded mouse lung tissue using HP1 alpha/CBX5 rabbit monoclonal antibody (STJ11101944) at a dilution of 1:200 (40x lens). High pressure antigen retrieval was performed with 0.01 M citrate buffer (pH 6.0) prior to immunohistochemistry staining.



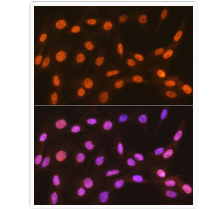
Immunohistochemistry analysis of HP1 alpha/CBX5 in paraffin-embedded mouse testis tissue using HP1 alpha/CBX5 rabbit monoclonal antibody (STJ11101944) at a dilution of 1:200 (40x lens). High pressure antigen retrieval was performed with 0.01 M citrate buffer (pH 6.0) prior to immunohistochemistry staining.



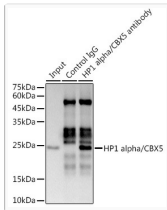
Immunohistochemistry analysis of HP1 alpha/CBX5 in paraffin-embedded rat brain tissue using HP1 alpha/CBX5 rabbit monoclonal antibody (STJ11101944) at a dilution of 1:200 (40x lens). High pressure antigen retrieval was performed with 0.01 M citrate buffer (pH 6.0) prior to immunohistochemistry staining.



Immunohistochemistry analysis of HP1 alpha/CBX5 in paraffin-embedded rat colon tissue using HP1 alpha/CBX5 rabbit monoclonal antibody (STJ11101944) at a dilution of 1:200 (40x lens). High pressure antigen retrieval was performed with 0.01 M citrate buffer (pH 6.0) prior to immunohistochemistry staining.



Immunofluorescence analysis of C6 cells using HP1 alpha/CBX5 rabbit monoclonal antibody (STJ11101944) at dilution of 1:100 (40x lens). Blue: DAPI for nuclear staining.



Immunoprecipitation analysis of 300 Mu g extracts of MCF7 cells using 3 Mu g HP1 alpha/CBX5 antibody (STJ11101944). Western blot was performed from the immunoprecipitate using HP1 alpha/CBX5 antibody (STJ11101944) at a dilution of 1:1000.