

Anti-FLNA antibody (2548-2647) [S3MR] (STJ11101943)

GENERAL INFORMATION

| | |
|---------------|--------------------|
| Product Type | Primary antibodies |
| Applications | WB/IHC-P/ELISA |
| Host / Source | Rabbit |
| Reactivity | Human/Mouse/Rat |

PRODUCT PROPERTIES

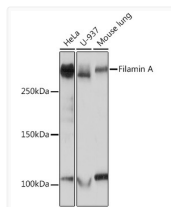
| | |
|---------------------|---|
| Clonality | Monoclonal |
| Concentration | Lot specific |
| Conjugation | Unconjugated |
| Purification | Affinity purification |
| Dilution Range | WB:1:1000-1:6000 IHC-P:1:400-1:4000 ELISA:Recommended starting concentration is 1 Mu g/mL. Please optimize the concentration based on your specific assay requirements. |
| Formulation | PBS with 0.02% Sodium Azide, 0.05% BSA, 50% Glycerol, pH 7.3. |
| Isotype | IgG |
| Molecular Weight | Protein Mw: 281kDa Observed Mw: 280kDa |
| Storage Instruction | Store at -20°C for up to 1 year from the date of receipt, and avoid repeat freeze-thaw cycles. |

TARGET INFORMATION

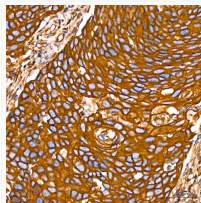
| | |
|--------------------|--|
| Gene ID | 2316 |
| Gene Symbol | FLNA |
| UniProt ID | FLNA_HUMAN |
| Immunogen Region | 2548-2647 |
| Immunogen Sequence | GAPGPGPADASKVVAKGLGL SKAYVGQKSSFTVDCSKAGN NMLLVGVHGPRTPCCEILVK HVGSRLYSVSYLLKDKGEYT LVVKWGDHPIGSPYRVVVP |
| Specificity | A synthetic peptide corresponding to a sequence within amino acids 2548-2647 of human Filamin A (P21333). |

ADDITIONAL INFORMATION

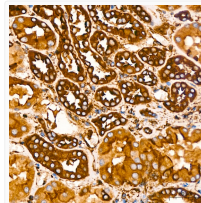
Note STRICTLY FOR FURTHER SCIENTIFIC RESEARCH USE ONLY (RUO). MUST NOT TO BE USED IN DIAGNOSTIC OR THERAPEUTIC APPLICATIONS.



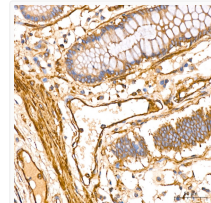
Western blot analysis of extracts of various cell lines, using Filamin A rabbit monoclonal antibody (STJ11101943) at 1:1000 dilution. Secondary antibody: HRP Goat Anti-rabbit IgG (H+L) (STJS000856) at 1:10000 dilution. Lysates/proteins: 25 Mu g per lane. Blocking buffer: 3% non-fat dry milk in TBST. Detection: ECL Basic Kit. Exposure time: 1s.



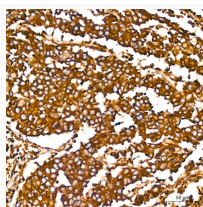
Immunohistochemistry analysis of Filamin A in paraffin-embedded human cervix cancer tissue using Filamin A rabbit monoclonal antibody (STJ11101943) at a dilution of 1:400 (40x lens). High pressure antigen retrieval was performed with 0.01 M citrate buffer (pH 6.0) prior to immunohistochemistry staining.



Immunohistochemistry analysis of Filamin A in paraffin-embedded human kidney tissue using Filamin A rabbit monoclonal antibody (STJ11101943) at a dilution of 1:200 (40x lens). High pressure antigen retrieval was performed with 0.01 M Tris-EDTA buffer (pH 9.0) prior to immunohistochemistry staining.



Immunohistochemistry analysis of Filamin A in paraffin-embedded human colon tissue using Filamin A rabbit monoclonal antibody (STJ11101943) at a dilution of 1:400 (40x lens). High pressure antigen retrieval was performed with 0.01 M citrate buffer (pH 6.0) prior to immunohistochemistry staining.



Immunohistochemistry analysis of Filamin A in paraffin-embedded human lung squamous carcinoma tissue using Filamin A rabbit monoclonal antibody (STJ11101943) at a dilution of 1:200 (40x lens). High pressure antigen retrieval was performed with 0.01 M Tris-EDTA buffer (pH 9.0) prior to immunohistochemistry staining.