

## Anti-CNN1 antibody (198-297) [S1MR] (STJ11101941)

### GENERAL INFORMATION

Product Type	Primary antibodies
Applications	WB/IHC-P/IF/ICC/ELISA
Host / Source	Rabbit
Reactivity	Human/Mouse/Rat

### PRODUCT PROPERTIES

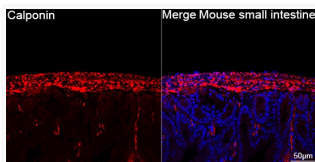
Clonality	Monoclonal
Concentration	Lot specific
Conjugation	Unconjugated
Purification	Affinity purification
Dilution Range	WB:1:1000-1:6000 IHC-P:1:1000-1:5000 IF/CC:1:200-1:800 ELISA:Recommended starting concentration is 1 $\mu$ g/mL. Please optimize the concentration based on your specific assay requirements.
Formulation	PBS with 0.02% Sodium Azide, 0.05% BSA, 50% Glycerol, pH 7.3.
Isotype	IgG
Molecular Weight	Protein Mw: 33kDa Observed Mw: 35kDa
Storage Instruction	Store at -20°C for up to 1 year from the date of receipt, and avoid repeat freeze-thaw cycles.

### TARGET INFORMATION

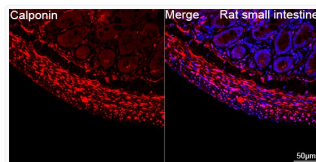
Gene ID	<a href="#">1264</a>
Gene Symbol	<a href="#">CNN1</a>
UniProt ID	<a href="#">CNN1_HUMAN</a>
Immunogen Region	198-297
Immunogen Sequence	PLDQATISLQMGTKNGASQA GMTAPGTKRQIFEPGLGMEH CDTLNVSLQMGSNKGASQRG MTVYGLPRQVYDPKYCLTPE YPELGEPAHNHHAHNYYNSA
Specificity	A synthetic peptide corresponding to a sequence within amino acids 198-297 of human Calponin (P51911).

### ADDITIONAL INFORMATION

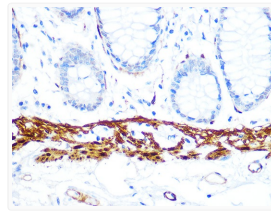
Note STRICTLY FOR FURTHER SCIENTIFIC RESEARCH USE ONLY (RUO). MUST NOT TO BE USED IN DIAGNOSTIC OR THERAPEUTIC APPLICATIONS.



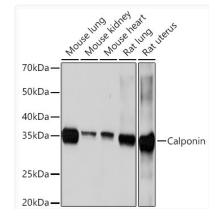
Confocal imaging of paraffin-embedded Mouse small intestine tissue using Calponin Rabbit monoclonal antibody (STJ11101941, dilution 1:200) followed by a further incubation with Cy3 Goat Anti-Rabbit IgG (H+L) ( dilution 1:500) (Red). DAPI was used for nuclear staining (Blue). Objective: 40x. Perform high pressure antigen retrieval with 0. 01 M citrate buffer (pH 6. 0) prior to IF staining.



Confocal imaging of paraffin-embedded Rat small intestine tissue using Calponin Rabbit monoclonal antibody (STJ11101941, dilution 1:200) followed by a further incubation with Cy3 Goat Anti-Rabbit IgG (H+L) ( dilution 1:500) (Red). DAPI was used for nuclear staining (Blue). Objective: 40x. Perform high pressure antigen retrieval with 0. 01 M citrate buffer (pH 6. 0) prior to IF staining.



Immunohistochemistry analysis of Calponin in paraffin-embedded human colon using Calponin Rabbit monoclonal antibody (STJ11101941) at dilution of 1:100 (40x lens). Perform microwave antigen retrieval with 10 mM PBS buffer pH 7. 2 before commencing with immunohistochemistry staining protocol.



Western blot analysis of various lysates using Calponin Rabbit monoclonal antibody (STJ11101941) at 1:1000 dilution. Secondary antibody: HRP Goat Anti-Rabbit IgG (H+L) (STJS000856) at 1:10000 dilution. Lysates/proteins: 25  $\mu$ g per lane. Blocking buffer: 3% nonfat dry milk in TBST. Detection: ECL Basic Kit. Exposure time: 10s.