

Anti-P2RY6 antibody (229-328) [S6MR] (STJ11101936)

GENERAL INFORMATION

Product Type	Primary antibodies
Applications	WB/ELISA
Host / Source	Rabbit
Reactivity	Human

PRODUCT PROPERTIES

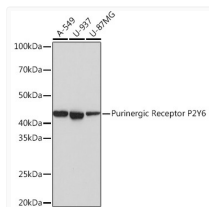
Clonality	Monoclonal
Concentration	Lot specific
Conjugation	Unconjugated
Purification	Affinity purification
Dilution Range	WB:1:500-1:2000 ELISA:Recommended starting concentration is 1 µg/mL. Please optimize the concentration based on your specific assay requirements.
Formulation	PBS with 0.02% Sodium Azide, 0.05% BSA, 50% Glycerol, pH 7.3.
Isotype	IgG
Molecular Weight	Protein Mw: 36kDa Observed Mw: 42kDa
Storage Instruction	Store at -20°C for up to 1 year from the date of receipt, and avoid repeat freeze-thaw cycles.

TARGET INFORMATION

Gene ID	5031
Gene Symbol	P2RY6
UniProt ID	P2RY6_HUMAN
Immunogen Region	229-328
Immunogen Sequence	VAQERRGKAARMAVVVAAAF AISFLPFHITKTAYLAVRST PGVPCTVLEAFAAAYKGTRP FASANSVLDPIILFYFTQKKF RRRPHELLQKLTAKWQRQGR
Specificity	A synthetic peptide corresponding to a sequence within amino acids 229-328 of human Purinergic Receptor P2Y6 (Q15077).

ADDITIONAL INFORMATION

Note **STRICTLY FOR FURTHER SCIENTIFIC RESEARCH USE ONLY (RUO). MUST NOT TO BE USED IN DIAGNOSTIC OR THERAPEUTIC APPLICATIONS.**



Western blot analysis of extracts of various cell lines, using Purinergic Receptor Purinergic Receptor P2Y6 Rabbit monoclonal antibody (STJ11101936) at 1:1000 dilution. Secondary antibody: HRP Goat Anti-Rabbit IgG (H+L) (STJS000856) at 1:10000 dilution. Lysates/proteins: 25 µg per lane. Blocking buffer: 3% nonfat dry milk in TBST. Detection: ECL Basic Kit. Exposure time: 1s.