

## Anti-PF4 antibody (1-101) [S9MR] (STJ11101929)

### GENERAL INFORMATION

Product Type	Primary antibodies
Applications	WB/IHC-P/IF/ICC/ELISA
Host / Source	Rabbit
Reactivity	Human/Mouse/Rat

### PRODUCT PROPERTIES

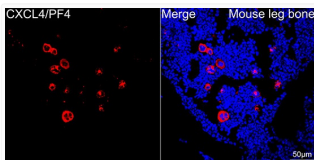
Clonality	Monoclonal
Concentration	Lot specific
Conjugation	Unconjugated
Purification	Affinity purification
Dilution Range	WB:1:1000-1:4000 IHC-P:1:100-1:1000 IF/CC:1:100-1:1000 ELISA:Recommended starting concentration is 1 $\mu$ g/mL. Please optimize the concentration based on your specific assay requirements.
Formulation	PBS with 0.02% Sodium Azide, 0.05% BSA, 50% Glycerol, pH 7.3.
Isotype	IgG
Molecular Weight	Protein Mw: 11kDa Observed Mw: 11kDa
Storage Instruction	Store at -20°C for up to 1 year from the date of receipt, and avoid repeat freeze-thaw cycles.

### TARGET INFORMATION

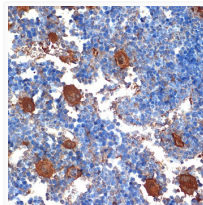
Gene ID	<a href="#">5196</a>
Gene Symbol	<a href="#">PF4</a>
UniProt ID	<a href="#">PLF4_HUMAN</a>
Immunogen Region	1-101
Immunogen Sequence	MSSAAGFCASRPGLLFLGLL LLPLVAFASAEAEEDGDLQ CLCVKTTSQVRPRHITSLEV IKAGPHCPTAQLIATLKNGR KICLDLQAPLYKKIKKLLLE S
Specificity	A synthetic peptide corresponding to a sequence within amino acids 1-101 of human CXCL4/CXCL4/PF4 (P02776).

### ADDITIONAL INFORMATION

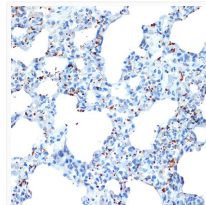
Note STRICTLY FOR FURTHER SCIENTIFIC RESEARCH USE ONLY (RUO). MUST NOT TO BE USED IN DIAGNOSTIC OR THERAPEUTIC APPLICATIONS.



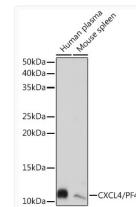
Confocal imaging of Mouse leg bone using CXCL4/PF4 Rabbit monoclonal antibody (STJ11101929, dilution 1:100) (Red). DAPI was used for nuclear staining (blue). Objective: 40x.



Immunohistochemistry analysis of CXCL4/PF4 in paraffin-embedded mouse bone marrow using CXCL4/PF4 Rabbit monoclonal antibody (STJ11101929) at dilution of 1:100 (40x lens). Perform microwave antigen retrieval with 10 mM Tris/EDTA buffer pH 9.0 before commencing with immunohistochemistry staining protocol.



Immunohistochemistry analysis of CXCL4/PF4 in paraffin-embedded rat lung using CXCL4/PF4 Rabbit monoclonal antibody (STJ11101929) at dilution of 1:100 (40x lens). Perform microwave antigen retrieval with 10 mM Tris/EDTA buffer pH 9.0 before commencing with immunohistochemistry staining protocol.



Western blot analysis of various lysates using CXCL4/PF4 Rabbit monoclonal antibody (STJ11101929) at 1:1000 dilution. Secondary antibody: HRP Goat Anti-Rabbit IgG (H+L) (STJS000856) at 1:10000 dilution. Lysates/proteins: 25  $\mu$ g per lane. Blocking buffer: 3% nonfat dry milk in TBST. Detection: ECL Basic Kit. Exposure time: 30s.