

## Anti-GUCY1B3 antibody (1-100) [S6MR] (STJ11101926)

### GENERAL INFORMATION

Product Type	Primary antibodies
Applications	WB/IHC-P/IF/ICC/ELISA
Host / Source	Rabbit
Reactivity	Human/Mouse/Rat

### PRODUCT PROPERTIES

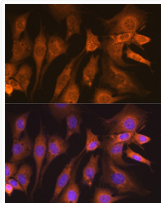
Clonality	Monoclonal
Concentration	Lot specific
Conjugation	Unconjugated
Purification	Affinity purification
Dilution Range	WB:1:1000-1:6000 IHC-P:1:200-1:800 IF/CC:1:100-1:400 ELISA:Recommended starting concentration is 1 Mu g/mL. Please optimize the concentration based on your specific assay requirements.
Formulation	PBS with 0.02% Sodium Azide, 0.05% BSA, 50% Glycerol, pH 7.3.
Isotype	IgG
Molecular Weight	Protein Mw: 71kDa Observed Mw: 71kDa
Storage Instruction	Store at -20°C for up to 1 year from the date of receipt, and avoid repeat freeze-thaw cycles.

### TARGET INFORMATION

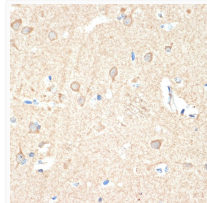
Gene ID	<a href="#">2983</a>
Gene Symbol	<a href="#">GUCY1B1</a>
UniProt ID	<a href="#">GUCYB1_HUMAN</a>
Immunogen Region	1-100
Immunogen Sequence	MYGFVNHALELLVIRNYGPE VVEDIKKEAQLDEEGQFLVR IYDSSKTYDLVAAASKVLN LNAGEILQMFQKMFVFCQE SGYDILRVLGNSNVREFLQN
Specificity	A synthetic peptide corresponding to a sequence within amino acids 1-100 of human Guanylyl Cyclase beta 1 (GUCY1B3) (Q02153).

### ADDITIONAL INFORMATION

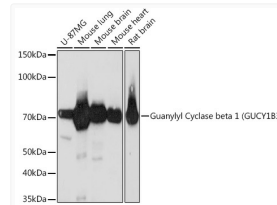
Note **STRICTLY FOR FURTHER SCIENTIFIC RESEARCH USE ONLY (RUO). MUST NOT TO BE USED IN DIAGNOSTIC OR THERAPEUTIC APPLICATIONS.**



Immunofluorescence analysis of NIH-3T3 cells using Guanylyl Cyclase beta 1 (GUCY1B3) (GUCY1B3) Rabbit monoclonal antibody (STJ11101926) at dilution of 1:100 (40x lens). Blue: DAPI for nuclear staining.



Immunohistochemistry analysis of paraffin-embedded human brain using Guanylyl Cyclase beta 1 (GUCY1B3) (GUCY1B3) Rabbit monoclonal antibody (STJ11101926) at dilution of 1:100 (40x lens). Perform microwave antigen retrieval with 10 mM Tris/EDTA buffer pH 9.0 before commencing with immunohistochemistry staining protocol.



Western blot analysis of extracts of various cell lines, using Guanylyl Cyclase beta 1 (GUCY1B3) (GUCY1B3) Rabbit monoclonal antibody (STJ11101926) at 1:1000 dilution. Secondary antibody: HRP Goat Anti-Rabbit IgG (H+L) (STJS000856) at 1:10000 dilution. Lysates/proteins: 25 Mu g per lane. Blocking buffer: 3% nonfat dry milk in TBST. Detection: ECL Basic Kit. Exposure time: 3min.