

## Anti-CR1 antibody (1940-2039) [S7MR] (STJ11101917)

### GENERAL INFORMATION

Product Type	Primary antibodies
Applications	IHC-P/IF/ICC/ELISA
Host / Source	Rabbit
Reactivity	Human/Mouse/Rat

### PRODUCT PROPERTIES

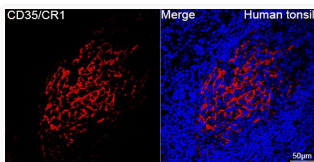
Clonality	Monoclonal
Concentration	Lot specific
Conjugation	Unconjugated
Purification	Affinity purification
Dilution Range	IHC-P:1:50-1:200 IF/CC:1:50-1:200 ELISA:Recommended starting concentration is 1 µg/mL. Please optimize the concentration based on your specific assay requirements.
Formulation	PBS with 0.05% Proclin300, 0.05% BSA, 50% Glycerol, pH 7.3.
Isotype	IgG
Molecular Weight	Protein Mw: 224kDa Observed Mw:
Storage Instruction	Store at -20°C for up to 1 year from the date of receipt, and avoid repeat freeze-thaw cycles.

### TARGET INFORMATION

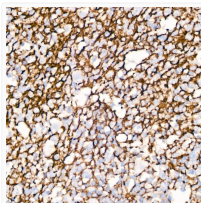
Gene ID	<a href="#">1378</a>
Gene Symbol	<a href="#">CR1</a>
UniProt ID	<a href="#">CR1_HUMAN</a>
Immunogen Region	1940-2039
Immunogen Sequence	DGYTLEGPWSQCQADDRWD PPLAKCTSRTHDALIVGTLG TTIFFILLIIFLSWIILKHR KGNNAHENPKVEVAIHLHSQG GSSVHPRTLQTNEENSRVLP
Specificity	A synthetic peptide corresponding to a sequence within amino acids 1940-2039 of human CD35/CR1 (P17927).

### ADDITIONAL INFORMATION

Note STRICTLY FOR FURTHER SCIENTIFIC RESEARCH USE ONLY (RUO). MUST NOT TO BE USED IN DIAGNOSTIC OR THERAPEUTIC APPLICATIONS.



Confocal imaging of paraffin-embedded Human tonsil tissue using CD35/CR1 Rabbit monoclonal antibody (STJ11101917, dilution 1:100) followed by a further incubation with Cy3 Goat Anti-Rabbit IgG (H+L) ( dilution 1:500) (Red). DAPI was used for nuclear staining (Blue). Objective: 40x. Perform high pressure antigen retrieval with 0. 01 M citrate buffer (pH 6. 0) prior to IF staining.



Immunohistochemistry analysis of CD35/CR1 in paraffin-embedded human tonsil using CD35/CR1 Rabbit monoclonal antibody (STJ11101917) at dilution of 1:50 (40x lens). Perform high pressure antigen retrieval with 10 mM citrate buffer pH 6. 0 before commencing with immunohistochemistry staining protocol.