

Anti-INA antibody (350-450) [S7MR] (STJ11101907)

GENERAL INFORMATION

Product Type	Primary antibodies
Applications	WB/IHC-P/IF/ICC/ELISA
Host / Source	Rabbit
Reactivity	Human/Mouse/Rat

PRODUCT PROPERTIES

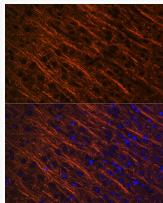
Clonality	Monoclonal
Concentration	Lot specific
Conjugation	Unconjugated
Purification	Affinity purification
Dilution Range	WB:1:500-1:2000 IHC-P:1:50-1:200 IF/ICC:1:50-1:200 ELISA:Recommended starting concentration is 1 μ g/mL. Please optimize the concentration based on your specific assay requirements.
Formulation	PBS with 0.02% Sodium Azide, 0.05% BSA, 50% Glycerol, pH 7.3.
Isotype	IgG
Molecular Weight	Protein Mw: 55kDa Observed Mw: 62-67kDa
Storage Instruction	Store at -20°C for up to 1 year from the date of receipt, and avoid repeat freeze-thaw cycles.

TARGET INFORMATION

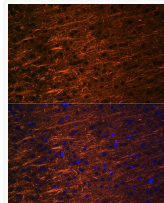
Gene ID	9118
Gene Symbol	INA
UniProt ID	AINX_HUMAN
Immunogen Region	350-450
Immunogen Sequence	EVAGYQDSIGQLENDLRNTK SEMARHLREYQDLLNVKML DIEIAAYRKLLEGEETRFST SGLSISGLNPLPNPSYLLPP RILSATTSKVSVSTGLSLKKE E
Specificity	A synthetic peptide corresponding to a sequence within amino acids 350-450 of human Alpha Internexin (Q16352).

ADDITIONAL INFORMATION

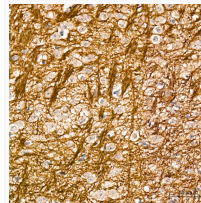
Note STRICTLY FOR FURTHER SCIENTIFIC RESEARCH USE ONLY (RUO). MUST NOT TO BE USED IN DIAGNOSTIC OR THERAPEUTIC APPLICATIONS.



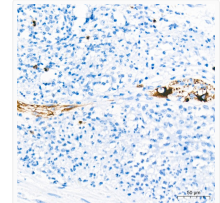
Immunofluorescence analysis of paraffin-embedded mouse brain using Alpha Internexin Rabbit monoclonal antibody (STJ11101907) at dilution of 1:100 (40x lens). Secondary antibody: Cy3 Goat Anti-Rabbit IgG (H+L) at 1:500 dilution. Blue: DAPI for nuclear staining.



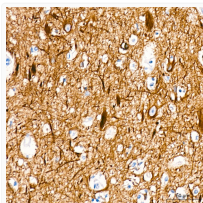
Immunofluorescence analysis of paraffin-embedded rat brain using Alpha Internexin Rabbit monoclonal antibody (STJ11101907) at dilution of 1:100 (40x lens). Secondary antibody: Cy3 Goat Anti-Rabbit IgG (H+L) at 1:500 dilution. Blue: DAPI for nuclear staining.



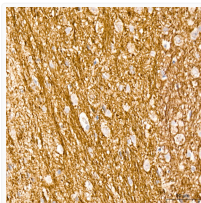
Immunohistochemistry analysis of Alpha Internexin in paraffin-embedded mouse brain tissue using Alpha Internexin Rabbit monoclonal antibody (STJ11101907) at a dilution of 1:200 (40x lens). High pressure antigen retrieval was performed with 0.01 M citrate buffer (pH 6.0) prior to immunohistochemistry staining.



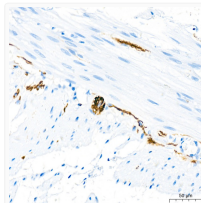
Immunohistochemistry analysis of Alpha Internexin in paraffin-embedded human appendix tissue using Alpha Internexin Rabbit monoclonal antibody (STJ11101907) at a dilution of 1:200 (40x lens). High pressure antigen retrieval was performed with 0.01 M citrate buffer (pH 6.0) prior to immunohistochemistry staining.



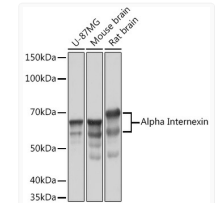
Immunohistochemistry analysis of Alpha Internexin in paraffin-embedded human brain tissue using Alpha Internexin Rabbit monoclonal antibody (STJ11101907) at a dilution of 1:200 (40x lens). High pressure antigen retrieval was performed with 0.01 M citrate buffer (pH 6.0) prior to immunohistochemistry staining.



Immunohistochemistry analysis of Alpha Internexin in paraffin-embedded rat brain tissue using Alpha Internexin Rabbit monoclonal antibody (STJ11101907) at a dilution of 1:200 (40x lens). High pressure antigen retrieval was performed with 0.01 M citrate buffer (pH 6.0) prior to immunohistochemistry staining.



Immunohistochemistry analysis of Alpha Internexin in paraffin-embedded human colon tissue using Alpha Internexin Rabbit monoclonal antibody (STJ11101907) at a dilution of 1:200 (40x lens). High pressure antigen retrieval was performed with 0.01 M citrate buffer (pH 6.0) prior to immunohistochemistry staining.



Western blot analysis of various lysates using Alpha Internexin Rabbit monoclonal antibody (STJ11101907) at 1:1000 dilution. Secondary antibody: HRP Goat Anti-Rabbit IgG (H+L) (STJS000856) at 1:10000 dilution. Lysates/proteins: 25 μ g per lane. Blocking buffer: 3% nonfat dry milk in TBST. Detection: ECL Basic Kit. Exposure time: 5s.