

Anti-IKZF1 antibody (250-350) [S0MR] (STJ11101900)

GENERAL INFORMATION

| | |
|---------------|------------------------------|
| Product Type | Primary antibodies |
| Applications | WB/IF/ICC/ELISA/ChIP/CUT&Tag |
| Host / Source | Rabbit |
| Reactivity | Human/Mouse |

PRODUCT PROPERTIES

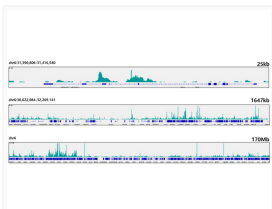
| | |
|---------------------|---|
| Clonality | Monoclonal |
| Concentration | Lot specific |
| Conjugation | Unconjugated |
| Purification | Affinity purification |
| Dilution Range | WB:1:500-1:2000 IF/CC:1:50-1:200 ELISA:Recommended starting concentration is 1 Mu g/mL. Please optimize the concentration based on your specific assay requirements. ChIP:5 Mu g antibody for 10 Mu g-15 Mu g of Chromatin CUT&Tag: 10 ⁵ c |
| Formulation | PBS with 0.02% Sodium Azide, 0.05% BSA, 50% Glycerol, pH 7.3. |
| Isotype | IgG |
| Molecular Weight | Protein Mw: 58kDa Observed Mw: 58kDa |
| Storage Instruction | Store at-20°C for up to 1 year from the date of receipt, and avoid repeat freeze-thaw cycles. |

TARGET INFORMATION

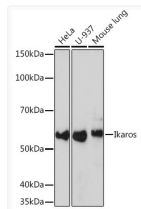
| | |
|--------------------|---|
| Gene ID | 10320 |
| Gene Symbol | IKZF1 |
| UniProt ID | IKZF1_HUMAN |
| Immunogen Region | 250-350 |
| Immunogen Sequence | AEDLCKIGSERSLVLDRLAS NVAKRKRSSMPQKFLGDKGLS DTPYDSSASYEKENEMMKSH VMDQAINNAINYLGAESLRP LVQTPPGGGSEVVPVISPMYQ L |
| Specificity | A synthetic peptide corresponding to a sequence within amino acids 250-350 of human Ikaros (Q13422). |

ADDITIONAL INFORMATION

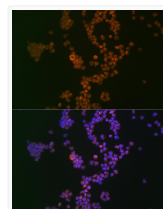
Note **STRICTLY FOR FURTHER SCIENTIFIC RESEARCH USE ONLY (RUO). MUST NOT TO BE USED IN DIAGNOSTIC OR THERAPEUTIC APPLICATIONS.**



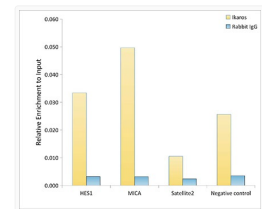
CUT&Tag was performed using the CUT&Tag Assay Kit (pAG-Tn5) for Illumina (RK20265) from 10⁵ K562 cells with 1 Mu g Ikaros rabbit monoclonal antibody (STJ11101900), along with a Goat Anti-rabbit IgG (H+L). The CUT&Tag results indicate the enrichment pattern of Ikaros in representative gene loci (MICA), as shown in figure.



Western blot analysis of extracts of various cell lines, using Ikaros rabbit monoclonal antibody (STJ11101900) at 1:1000 dilution. Secondary antibody: HRP Goat Anti-rabbit IgG (H+L) (STJS000856) at 1:10000 dilution. Lysates/proteins: 25 Mu g per lane. Blocking buffer: 3% non-fat dry milk in TBST. Detection: ECL Basic Kit. Exposure time: 3min.



Immunofluorescence analysis of Jurkat cells using Ikaros rabbit monoclonal antibody (STJ11101900) at dilution of 1:100 (40x lens). Blue: DAPI for nuclear staining.



Chromatin immunoprecipitation analysis of extracts of K-562 cells, using Ikaros antibody (STJ11101900) and rabbit IgG. The amount of immunoprecipitated DNA was checked by quantitative PCR. Histogram was constructed by the ratios of the immunoprecipitated DNA to the input.