

Anti-RNF2 antibody (100-200) [S9MR] (STJ11101899)

GENERAL INFORMATION

| | |
|---------------|--------------------|
| Product Type | Primary antibodies |
| Applications | WB/IP/ELISA |
| Host / Source | Rabbit |
| Reactivity | Human/Mouse/Rat |

PRODUCT PROPERTIES

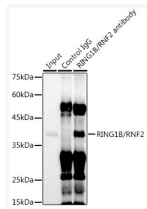
| | |
|---------------------|---|
| Clonality | Monoclonal |
| Concentration | Lot specific |
| Conjugation | Unconjugated |
| Purification | Affinity purification |
| Dilution Range | WB:1:500-1:2000 IP:0.5 Mu g-4 Mu g antibody for 200 Mu g-400 Mu g extracts of whole cells ELISA:Recommended starting concentration is 1 Mu g/mL. Please optimize the concentration based on your specific assay requirements. |
| Formulation | PBS with 0.02% Sodium Azide, 0.05% BSA, 50% Glycerol, pH 7.3. |
| Isotype | IgG |
| Molecular Weight | Protein Mw: 38kDa Observed Mw: 38kDa |
| Storage Instruction | Store at -20°C for up to 1 year from the date of receipt, and avoid repeat freeze-thaw cycles. |

TARGET INFORMATION

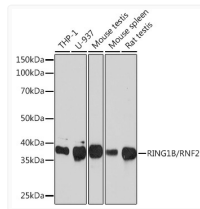
| | |
|--------------------|---|
| Gene ID | 6045 |
| Gene Symbol | RNF2 |
| UniProt ID | RING2_HUMAN |
| Immunogen Region | 100-200 |
| Immunogen Sequence | LRPDPNFDALISKIYPSRDE YEAHQERVLARINKHNNQQA LSHSIEEGLKIQAMNRLQRG KKQIENGSGAEDNGDSSHCSNASTHSNQEAGPSNKRRTKTS |
| Specificity | A synthetic peptide corresponding to a sequence within amino acids 100-200 of human RING1B/RNF2 (Q99496). |

ADDITIONAL INFORMATION

Note STRICTLY FOR FURTHER SCIENTIFIC RESEARCH USE ONLY (RUO). MUST NOT TO BE USED IN DIAGNOSTIC OR THERAPEUTIC APPLICATIONS.



Immunoprecipitation analysis of 300 Mu g extracts of U-937 cells using 3 Mu g RING1B/RNF2 antibody (STJ11101899). Western blot was performed from the immunoprecipitate using RING1B/RNF2 antibody (STJ11101899) at a dilution of 1:500.



Western blot analysis of various lysates using RING1B/RNF2 Rabbit monoclonal antibody (STJ11101899) at 1:1000 dilution. Secondary antibody: HRP Goat Anti-Rabbit IgG (H+L) (STJS000856) at 1:10000 dilution. Lysates/proteins: 25 Mu g per lane. Blocking buffer: 3% nonfat dry milk in TBST. Detection: ECL Basic Kit. Exposure time: 3min.