

## Anti-SMARCA5 antibody (953-1052) [S5MR] (STJ11101895)

### GENERAL INFORMATION

Product Type	Primary antibodies
Applications	WB/IF/ICC/ELISA
Host / Source	Rabbit
Reactivity	Human/Mouse/Rat

### PRODUCT PROPERTIES

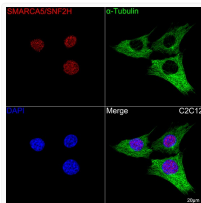
Clonality	Monoclonal
Concentration	Lot specific
Conjugation	Unconjugated
Purification	Affinity purification
Dilution Range	WB:1:1000-1:6000 IF/CC:1:100-1:500 ELISA:Recommended starting concentration is 1 Mu g/mL. Please optimize the concentration based on your specific assay requirements.
Formulation	PBS with 0.02% Sodium Azide, 0.05% BSA, 50% Glycerol, pH 7.3.
Isotype	IgG
Molecular Weight	Protein Mw: 122kDa Observed Mw: 130kDa
Storage Instruction	Store at -20°C for up to 1 year from the date of receipt, and avoid repeat freeze-thaw cycles.

### TARGET INFORMATION

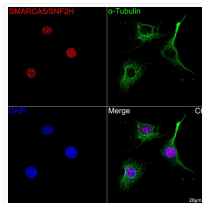
Gene ID	<a href="#">8467</a>
Gene Symbol	<a href="#">SMARCA5</a>
UniProt ID	<a href="#">SMCA5_HUMAN</a>
Immunogen Region	953-1052
Immunogen Sequence	RFLICMLHLKLGFDKENVYDE LRQCIRNSPQFRFDWFLKSR TAMELQRRCNTLITLIEREN MELEEKEKAEEKKRGPKPST QKRKMDGAPDGRGRKKLKL
Specificity	A synthetic peptide corresponding to a sequence within amino acids 953-1052 of human SMARCA5/SNF2H (O60264).

### ADDITIONAL INFORMATION

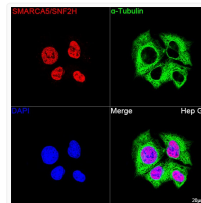
Note STRICTLY FOR FURTHER SCIENTIFIC RESEARCH USE ONLY (RUO). MUST NOT TO BE USED IN DIAGNOSTIC OR THERAPEUTIC APPLICATIONS.



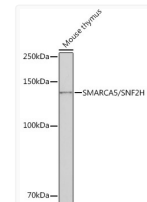
Confocal imaging of C2C12 cells using SMARCA5/SNF2H Rabbit monoclonal antibody (STJ11101895, dilution 1:100) followed by a further incubation with Cy3 Goat Anti-Rabbit IgG (H+L) (dilution 1:500) (Red). The cells were counterstained with Alpha-Tubulin Mouse monoclonal antibody (dilution 1:400) followed by incubation with ABflo® 488-conjugated Goat Anti-Mouse IgG (H+L) antibody (dilution 1:500) (Green). DAPI was used for nuclear staining (Blue). Objective: 100x.



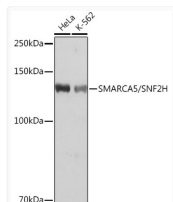
Confocal imaging of C6 cells using SMARCA5/SNF2H Rabbit monoclonal antibody (STJ11101895, dilution 1:100) followed by a further incubation with Cy3 Goat Anti-Rabbit IgG (H+L) (dilution 1:500) (Red). The cells were counterstained with Alpha-Tubulin Mouse monoclonal antibody (dilution 1:400) followed by incubation with ABflo® 488-conjugated Goat Anti-Mouse IgG (H+L) antibody (dilution 1:500) (Green). DAPI was used for nuclear staining (Blue). Objective: 100x.



Confocal imaging of Hep G2 cells using SMARCA5/SNF2H Rabbit monoclonal antibody (STJ11101895, dilution 1:100) followed by a further incubation with Cy3 Goat Anti-Rabbit IgG (H+L) (dilution 1:500) (Red). The cells were counterstained with Alpha-Tubulin Mouse monoclonal antibody (dilution 1:400) followed by incubation with ABflo® 488-conjugated Goat Anti-Mouse IgG (H+L) antibody (dilution 1:500) (Green). DAPI was used for nuclear staining (Blue). Objective: 100x.



Western blot analysis of lysates from Mouse thymus, using SMARCA5/SNF2H Rabbit monoclonal antibody (STJ11101895) at 1:1000 dilution. Secondary antibody: HRP Goat Anti-Rabbit IgG (H+L) (STJS000856) at 1:10000 dilution. Lysates/proteins: 25 Mu g per lane. Blocking buffer: 3% nonfat dry milk in TBST. Detection: ECL Basic Kit. Exposure time: 10s.



Western blot analysis of various lysates using SMARCA5/SNF2H Rabbit monoclonal antibody (STJ11101895) at 1:1000 dilution. Secondary antibody: HRP Goat Anti-Rabbit IgG (H+L) (STJS000856) at 1:10000 dilution. Lysates/proteins: 25 Mu g per lane. Blocking buffer: 3% nonfat dry milk in TBST. Detection: ECL Basic Kit. Exposure time: 1s.