

Anti-DPYSL5 antibody (465-564) [S8MR] (STJ11101888)

GENERAL INFORMATION

Product Type	Primary antibodies
Applications	WB/IHC-P/ELISA
Host / Source	Rabbit
Reactivity	Human/Mouse/Rat

PRODUCT PROPERTIES

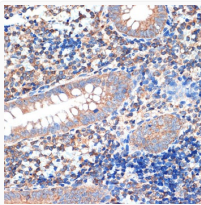
Clonality	Monoclonal
Concentration	Lot specific
Conjugation	Unconjugated
Purification	Affinity purification
Dilution Range	WB:1:500-1:2000 IHC-P:1:50-1:200 ELISA:Recommended starting concentration is 1 Mu g/mL. Please optimize the concentration based on your specific assay requirements.
Formulation	PBS with 0.02% Sodium Azide, 0.05% BSA, 50% Glycerol, pH 7.3.
Isotype	IgG
Molecular Weight	Protein Mw: 61kDa Observed Mw: 60kDa
Storage Instruction	Store at -20°C for up to 1 year from the date of receipt, and avoid repeat freeze-thaw cycles.

TARGET INFORMATION

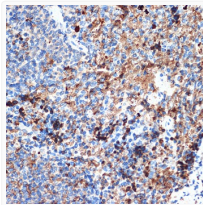
Gene ID	56896
Gene Symbol	DPYSL5
UniProt ID	DPYL5_HUMAN
Immunogen Region	465-564
Immunogen Sequence	RSFPDVTYVKLVQREKTLKV RGVDRTPYLGDVAVVVHPGK KEMGTPLADTPTRPVTRHGG MRDLHESSFSLSGSQIDHDV PKRASARILAPPGRRSSGIW
Specificity	A synthetic peptide corresponding to a sequence within amino acids 465-564 of human CRMP5/DPYSL5 (Q9BPU6).

ADDITIONAL INFORMATION

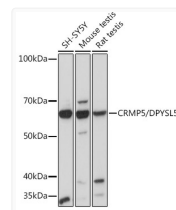
Note STRICTLY FOR FURTHER SCIENTIFIC RESEARCH USE ONLY (RUO). MUST NOT TO BE USED IN DIAGNOSTIC OR THERAPEUTIC APPLICATIONS.



Immunohistochemistry analysis of paraffin-embedded human appendix using CRMP5/DPYSL5 Rabbit monoclonal antibody (STJ11101888) at dilution of 1:100 (40x lens). Perform microwave antigen retrieval with 10 mM Tris/EDTA buffer pH 9.0 before commencing with immunohistochemistry staining protocol.



Immunohistochemistry analysis of paraffin-embedded rat spleen using CRMP5/DPYSL5 Rabbit monoclonal antibody (STJ11101888) at dilution of 1:100 (40x lens). Perform microwave antigen retrieval with 10 mM Tris/EDTA buffer pH 9.0 before commencing with immunohistochemistry staining protocol.



Western blot analysis of extracts of various cell lines, using CRMP5/DPYSL5 Rabbit monoclonal antibody (STJ11101888) at 1:1000 dilution. Secondary antibody: HRP Goat Anti-Rabbit IgG (H+L) (STJS000856) at 1:10000 dilution. Lysates/proteins: 25 Mu g per lane. Blocking buffer: 3% nonfat dry milk in TBST. Detection: ECL Basic Kit. Exposure time: 10s.