

Anti-HRH3 antibody (1-100) [S6MR] (STJ11101886)

GENERAL INFORMATION

Product Type	Primary antibodies
Applications	WB/IP/ELISA
Host / Source	Rabbit
Reactivity	Human/Mouse/Rat

PRODUCT PROPERTIES

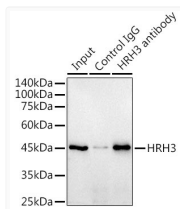
Clonality	Monoclonal
Concentration	Lot specific
Conjugation	Unconjugated
Purification	Affinity purification
Dilution Range	WB:1:500-1:2000 IP:0.5 Mu g-4 Mu g antibody for 200 Mu g-400 Mu g extracts of whole cells ELISA:Recommended starting concentration is 1 Mu g/mL. Please optimize the concentration based on your specific assay requirements.
Formulation	PBS with 0.02% Sodium Azide, 0.05% BSA, 50% Glycerol, pH 7.3.
Isotype	IgG
Molecular Weight	Protein Mw: 49kDa Observed Mw: 45kDa
Storage Instruction	Store at -20°C for up to 1 year from the date of receipt, and avoid repeat freeze-thaw cycles.

TARGET INFORMATION

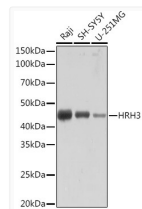
Gene ID	11255
Gene Symbol	HRH3
UniProt ID	HRH3_HUMAN
Immunogen Region	1-100
Immunogen Sequence	MERAPPDGPLNASGALAGEA AAAGGARGFSAAWTAVLAAL MALLIVATVLGNALVMLAFV ADSSLRTQNNFFLLNLAISD FLVGAFCIPLYVPYVLTGRW
Specificity	A synthetic peptide corresponding to a sequence within amino acids 1-100 of human HRH3 (Q9Y5N1).

ADDITIONAL INFORMATION

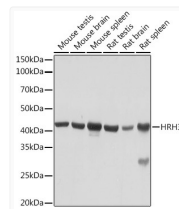
Note STRICTLY FOR FURTHER SCIENTIFIC RESEARCH USE ONLY (RUO). MUST NOT TO BE USED IN DIAGNOSTIC OR THERAPEUTIC APPLICATIONS.



Immunoprecipitation analysis of 300 Mu g extracts of Raji cells using 3 Mu g HRH3 antibody (STJ11101886). Western blot was performed from the immunoprecipitate using HRH3 antibody (STJ11101886) at a dilution of 1:1000.



Western blot analysis of various lysates using HRH3 Rabbit monoclonal antibody (STJ11101886) at 1:1000 dilution. Secondary antibody: HRP Goat Anti-Rabbit IgG (H+L) (STJS000856) at 1:10000 dilution. Lysates/proteins: 25 Mu g per lane. Blocking buffer: 3% nonfat dry milk in TBST. Detection: ECL Basic Kit. Exposure time: 3min.



Western blot analysis of various lysates using HRH3 Rabbit monoclonal antibody (STJ11101886) at 1:1000 dilution. Secondary antibody: HRP Goat Anti-Rabbit IgG (H+L) (STJS000856) at 1:10000 dilution. Lysates/proteins: 25 Mu g per lane. Blocking buffer: 3% nonfat dry milk in TBST. Detection: ECL Basic Kit. Exposure time: 10s.