

Anti-TBK1 antibody (1-100) [S2MR] (STJ11101872)

GENERAL INFORMATION

Product Type	Primary antibodies
Applications	WB/IF/ICC/IP/ELISA
Host / Source	Rabbit
Reactivity	Human/Mouse/Rat

PRODUCT PROPERTIES

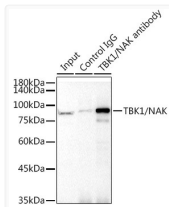
Clonality	Monoclonal
Concentration	Lot specific
Conjugation	Unconjugated
Purification	Affinity purification
Dilution Range	WB:1:1000-1:4000 IF/CC:1:100-1:800 IP:0.5 Mu g-4 Mu g antibody for 200 Mu g-400 Mu g extracts of whole cells ELISA:Recommended starting concentration is 1 Mu g/mL. Please optimize the concentration based on your specific assay requiremen
Formulation	PBS with 0.09% Sodium Azide, 0.05% BSA, 50% Glycerol, pH7.3.
Isotype	IgG
Molecular Weight	Protein Mw: 84kDa Observed Mw: 84kDa
Storage Instruction	Store at -20°C for up to 1 year from the date of receipt, and avoid repeat freeze-thaw cycles.

TARGET INFORMATION

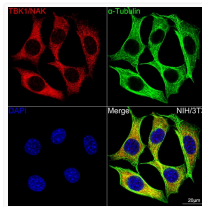
Gene ID	29110
Gene Symbol	TBK1
UniProt ID	TBK1_HUMAN
Immunogen Region	1-100
Immunogen Sequence	MQSTSNHLWLLSDILGQGAT ANVFRGRHKKTGDLFAIKVF NNISFLRPVDVQMREFEVLK KLNHNKIVKLFIAIEEETTR HKVLI MEFCPCGSLYTVLEE
Specificity	A synthetic peptide corresponding to a sequence within amino acids 1-100 of human TBK1/NAK (Q9UHD2).

ADDITIONAL INFORMATION

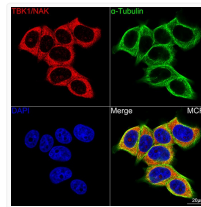
Note STRICTLY FOR FURTHER SCIENTIFIC RESEARCH USE ONLY (RUO). MUST NOT TO BE USED IN DIAGNOSTIC OR THERAPEUTIC APPLICATIONS.



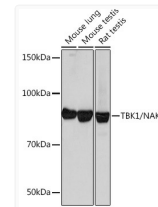
Immunoprecipitation analysis of 300 Mu g extracts from 293T cells using 3 Mu g TBK1/NAK Rabbit monoclonal antibody (STJ11101872). Western blot was performed from the immunoprecipitate using TBK1/NAK Rabbit monoclonal antibody (STJ11101872) at a dilution of 1:1000.



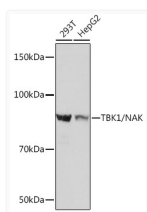
Confocal imaging of NIH/3T3 cells using TBK1/NAK Rabbit monoclonal antibody (STJ11101872, at dilution of 1:100) (Red). The cells were counterstained with Alpha-Tubulin Mouse monoclonal antibody (dilution 1:400) (Green). DAPI was used for nuclear staining (blue). Objective: 100x.



Confocal imaging of MCF7 cells using TBK1/NAK Rabbit monoclonal antibody (STJ11101872, at dilution of 1:100) (Red). The cells were counterstained with Alpha-Tubulin Mouse monoclonal antibody (dilution 1:400) (Green). DAPI was used for nuclear staining (blue). Objective: 100x.



Western blot analysis of various lysates using TBK1/NAK Rabbit monoclonal antibody (STJ11101872) at 1:1000 dilution. Secondary antibody: HRP Goat Anti-Rabbit IgG (H+L) (STJS000856) at 1:10000 dilution. Lysates/proteins: 25 Mu g per lane. Blocking buffer: 3% nonfat dry milk in TBST. Detection: ECL Basic Kit. Exposure time: 30s.



Western blot analysis of various lysates using TBK1/NAK Rabbit monoclonal antibody (STJ11101872) at 1:1000 dilution. Secondary antibody: HRP Goat Anti-Rabbit IgG (H+L) (STJS000856) at 1:10000 dilution. Lysates/proteins: 25 Mu g per lane. Blocking buffer: 3% nonfat dry milk in TBST. Detection: ECL Basic Kit. Exposure time: 3s.