

Anti-PLSCR1 antibody (1-100) [S7MR] (STJ11101867)

GENERAL INFORMATION

Product Type	Primary antibodies
Applications	WB/IHC-P/IF/ICC/ELISA
Host / Source	Rabbit
Reactivity	Human/Mouse/Rat

PRODUCT PROPERTIES

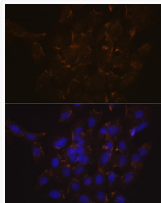
Clonality	Monoclonal
Concentration	Lot specific
Conjugation	Unconjugated
Purification	Affinity purification
Dilution Range	WB:1:500-1:1000 IHC-P:1:50-1:200 IF/ICC:1:50-1:200 ELISA:Recommended starting concentration is 1 Mu g/mL. Please optimize the concentration based on your specific assay requirements.
Formulation	PBS with 0.02% Sodium Azide, 0.05% BSA, 50% Glycerol, pH 7.3.
Isotype	IgG
Molecular Weight	Protein Mw: 35kDa Observed Mw: 35kDa
Storage Instruction	Store at -20°C for up to 1 year from the date of receipt, and avoid repeat freeze-thaw cycles.

TARGET INFORMATION

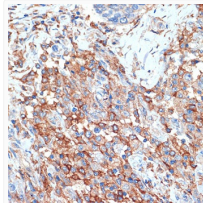
Gene ID	5359
Gene Symbol	PLSCR1
UniProt ID	PLS1_HUMAN
Immunogen Region	1-100
Immunogen Sequence	MDKQNSQMNASHPETNLPVG YPPQYPPTAFQGGPPGYSGYP GPQVSYPPPPAGHSGPGPAG FPVPNQPVYNQPVYNQPVGA AGVPWMPAPQPPLNCPPGLE
Specificity	A synthetic peptide corresponding to a sequence within amino acids 1-100 of human Phospholipid Scramblase 1 (PLSCR1) (NP_066928.1).

ADDITIONAL INFORMATION

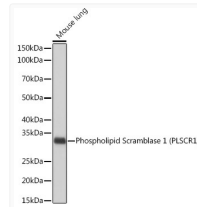
Note **STRICTLY FOR FURTHER SCIENTIFIC RESEARCH USE ONLY (RUO). MUST NOT TO BE USED IN DIAGNOSTIC OR THERAPEUTIC APPLICATIONS.**



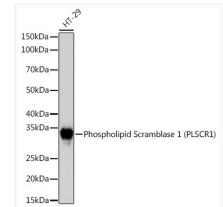
Immunofluorescence analysis of C6 cells using Phospholipid Scramblase 1 (PLSCR1) Rabbit monoclonal antibody (STJ11101867) at dilution of 1:100 (40x lens). Blue: DAPI for nuclear staining.



Immunohistochemistry analysis of paraffin-embedded human breast cancer using Phospholipid Scramblase 1 (PLSCR1) Rabbit monoclonal antibody (STJ11101867) at dilution of 1:100 (40x lens). Perform microwave antigen retrieval with 10 mM Tris/EDTA buffer pH 9.0 before commencing with immunohistochemistry staining protocol.



Western blot analysis of extracts of Mouse lung, using Phospholipid Scramblase 1 (PLSCR1) Rabbit monoclonal antibody (STJ11101867) at 1:1000 dilution. Secondary antibody: HRP Goat Anti-Rabbit IgG (H+L) (STJS000856) at 1:10000 dilution. Lysates/proteins: 25 Mu g per lane. Blocking buffer: 3% nonfat dry milk in TBST. Detection: ECL Basic Kit. Exposure time: 10s.



Western blot analysis of extracts of HT-29 cells, using Phospholipid Scramblase 1 (PLSCR1) Rabbit monoclonal antibody (STJ11101867) at 1:1000 dilution. Secondary antibody: HRP Goat Anti-Rabbit IgG (H+L) (STJS000856) at 1:10000 dilution. Lysates/proteins: 25 Mu g per lane. Blocking buffer: 3% nonfat dry milk in TBST. Detection: ECL Basic Kit. Exposure time: 3s.