

## Anti-TG antibody (1000-1100) [S4MR] (STJ11101864)

### GENERAL INFORMATION

Product Type	Primary antibodies
Applications	IHC-P/IF/ICC/ELISA
Host / Source	Rabbit
Reactivity	Human/Mouse/Rat

### PRODUCT PROPERTIES

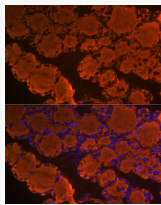
Clonality	Monoclonal
Concentration	Lot specific
Conjugation	Unconjugated
Purification	Affinity purification
Dilution Range	IHC-P:1:50-1:200 IF/CC:1:50-1:200 ELISA:Recommended starting concentration is 1 Mu g/mL. Please optimize the concentration based on your specific assay requirements.
Formulation	PBS with 0.02% Sodium Azide, 0.05% BSA, 50% Glycerol, pH 7.3.
Isotype	IgG
Molecular Weight	Protein Mw: 305kDa Observed Mw:
Storage Instruction	Store at -20°C for up to 1 year from the date of receipt, and avoid repeat freeze-thaw cycles.

### TARGET INFORMATION

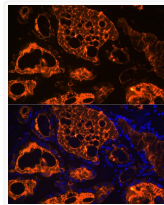
Gene ID	<a href="#">7038</a>
Gene Symbol	<a href="#">TG</a>
UniProt ID	<a href="#">THYG_HUMAN</a>
Immunogen Region	1000-1100
Immunogen Sequence	STLSFYQRRRFPDDSAGAS ALLRSGPYMPQCDAFGSWEP VQCHAGTGHCWCVDEKGGFI PGSLTARSLQIPQCPTTCEK SRTSGLLSSWKQARSQENPS P
Specificity	A synthetic peptide corresponding to a sequence within amino acids 1000-1100 of human Thyroglobulin (P01266).

### ADDITIONAL INFORMATION

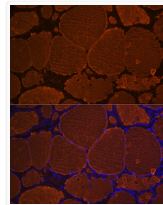
Note STRICTLY FOR FURTHER SCIENTIFIC RESEARCH USE ONLY (RUO). MUST NOT TO BE USED IN DIAGNOSTIC OR THERAPEUTIC APPLICATIONS.



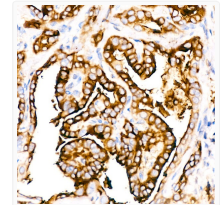
Immunofluorescence analysis of paraffin-embedded mouse thyroid using Thyroglobulin Rabbit monoclonal antibody (STJ11101864) at dilution of 1:100 (40x lens). Secondary antibody: Cy3 Goat Anti-Rabbit IgG (H+L) at 1:500 dilution. Blue: DAPI for nuclear staining.



Immunofluorescence analysis of paraffin-embedded human thyroid using Thyroglobulin Rabbit monoclonal antibody (STJ11101864) at dilution of 1:100 (40x lens). Secondary antibody: Cy3 Goat Anti-Rabbit IgG (H+L) at 1:500 dilution. Blue: DAPI for nuclear staining.



Immunofluorescence analysis of paraffin-embedded rat thyroid using Thyroglobulin Rabbit monoclonal antibody (STJ11101864) at dilution of 1:100 (40x lens). Secondary antibody: Cy3 Goat Anti-Rabbit IgG (H+L) at 1:500 dilution. Blue: DAPI for nuclear staining.



Immunohistochemistry analysis of Thyroglobulin in paraffin-embedded human thyroid cancer using Thyroglobulin Rabbit monoclonal antibody (STJ11101864) at dilution of 1:100 (40x lens). Perform high pressure antigen retrieval with 10 mM citrate buffer pH 6.0 before commencing with immunohistochemistry staining protocol.