

## Anti-RPA1 antibody (1-100) [S5MR] (STJ11101855)

### GENERAL INFORMATION

|               |                    |
|---------------|--------------------|
| Product Type  | Primary antibodies |
| Applications  | WB/IP/ELISA/ChIP   |
| Host / Source | Rabbit             |
| Reactivity    | Human/Rat          |

### PRODUCT PROPERTIES

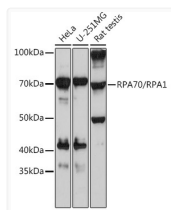
|                     |   |
|---------------------|---|
| Clonality           | Monoclonal  |
| Concentration       | Lot specific  |
| Conjugation         | Unconjugated  |
| Purification        | Affinity purification   |
| Dilution Range      | WB:1:500-1:2000<br>IP:0.5 Mu g-4 Mu g antibody for 200 Mu g-400 Mu g extracts of whole cells<br>ELISA:Recommended starting concentration is 1 Mu g/mL. Please optimize the concentration based on your specific assay requirements.<br>ChIP:5 Mu g anti |
| Formulation         | PBS with 0.02% Sodium Azide, 0.05% BSA, 50% Glycerol, pH 7.3.   |
| Isotype             | IgG   |
| Molecular Weight    | Protein Mw: 68kDa<br>Observed Mw: 70kDa   |
| Storage Instruction | Store at -20°C for up to 1 year from the date of receipt, and avoid repeat freeze-thaw cycles.  |

### TARGET INFORMATION

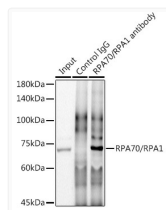
|                    |  |
|--------------------|--|
| Gene ID            | <a href="#">6117</a>   |
| Gene Symbol        | <a href="#">RPA1</a>   |
| UniProt ID         | <a href="#">RFA1_HUMAN</a>   |
| Immunogen Region   | 1-100  |
| Immunogen Sequence | MVGQLSEGAIAAIMQKGD TN IKPILQVINIRPITTTGNSPP RYRLMSDGLNLTSSFMLAT<br>QLNPLVEEEQLSSNCVCQIH RFIVNTLKDGRRVVILMELE |
| Specificity        | A synthetic peptide corresponding to a sequence within amino acids 1-100 of human RPA70/RPA1 (P27694).       |

### ADDITIONAL INFORMATION

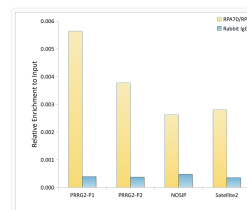
Note **STRICTLY FOR FURTHER SCIENTIFIC RESEARCH USE ONLY (RUO). MUST NOT TO BE USED IN DIAGNOSTIC OR THERAPEUTIC APPLICATIONS.**



Western blot analysis of extracts of various cell lines, using RPA70/RPA1 rabbit monoclonal antibody (STJ11101855) at 1:1000 dilution. Secondary antibody: HRP Goat Anti-rabbit IgG (H+L) (STJS000856) at 1:10000 dilution. Lysates/proteins: 25 Mu g per lane. Blocking buffer: 3% non-fat dry milk in TBST. Detection: ECL Basic Kit. Exposure time: 30s.



Immunoprecipitation analysis of 300 Mu g extracts of HeLa cells using 3 Mu g RPA70/RPA1 antibody (STJ11101855). Western blot was performed from the immunoprecipitate using RPA70/RPA1 antibody (STJ11101855) at a dilution of 1:1000.



Chromatin immunoprecipitation analysis of extracts of HeLa cells, using RPA70/RPA1 rabbit monoclonal antibody (STJ11101855) and rabbit IgG. The amount of immunoprecipitated DNA was checked by quantitative PCR. Histogram was constructed by the ratios of the immunoprecipitated DNA to the input.