

Anti-CDC27 antibody (702-824) [S1MR] (STJ11101851)

GENERAL INFORMATION

Product Type	Primary antibodies
Applications	WB/ELISA
Host / Source	Rabbit
Reactivity	Human/Mouse

PRODUCT PROPERTIES

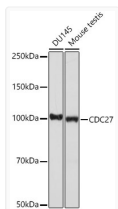
Clonality	Monoclonal
Concentration	Lot specific
Conjugation	Unconjugated
Purification	Affinity purification
Dilution Range	WB:1:500-1:2000 ELISA:Recommended starting concentration is 1 Mu g/mL. Please optimize the concentration based on your specific assay requirements.
Formulation	PBS with 0.02% Sodium Azide, 0.05% BSA, 50% Glycerol, pH 7.3.
Isotype	IgG
Molecular Weight	Protein Mw: 92kDa Observed Mw: 100kDa
Storage Instruction	Store at -20°C for up to 1 year from the date of receipt, and avoid repeat freeze-thaw cycles.

TARGET INFORMATION

Gene ID	996
Gene Symbol	CDC27
UniProt ID	CDC27_HUMAN
Immunogen Region	702-824
Immunogen Sequence	NPLCKFHRASVLFANEKYKS ALQELEELKQIVPKESLVYF LIGKVYKGLGQTHLALMNFS WAMDLDPKGANNQIKEAIDK RYLPDDEEPITQEEQIMGTD ESQESSMTDADDTQLHAAES DEF
Specificity	Recombinant fusion protein containing a sequence corresponding to amino acids 702-824 of human CDC27 (P30260).

ADDITIONAL INFORMATION

Note **STRICTLY FOR FURTHER SCIENTIFIC RESEARCH USE ONLY (RUO). MUST NOT TO BE USED IN DIAGNOSTIC OR THERAPEUTIC APPLICATIONS.**



Western blot analysis of extracts of various cell lines, using CDC27 Rabbit monoclonal antibody (STJ11101851) at 1:1000 dilution. Secondary antibody: HRP Goat Anti-Rabbit IgG (H+L) (STJS000856) at 1:10000 dilution. Lysates/proteins: 25 Mu g per lane. Blocking buffer: 3% nonfat dry milk in TBST. Detection: ECL Basic Kit. Exposure time: 10s.