

Anti-IRF6 antibody (368-467) [S7MR] (STJ11101837)

GENERAL INFORMATION

Product Type	Primary antibodies
Applications	WB/IF/ICC/IP/ELISA
Host / Source	Rabbit
Reactivity	Human/Mouse/Rat

PRODUCT PROPERTIES

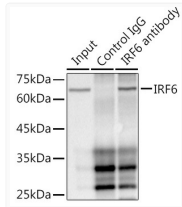
Clonality	Monoclonal
Concentration	Lot specific
Conjugation	Unconjugated
Purification	Affinity purification
Dilution Range	WB:1:500-1:1000 IF/CC:1:50-1:200 IP:0.5 Mu g-4 Mu g antibody for 200 Mu g-400 Mu g extracts of whole cells ELISA:Recommended starting concentration is 1 Mu g/mL. Please optimize the concentration based on your specific assay requirements
Formulation	PBS with 0.02% Sodium Azide, 0.05% BSA, 50% Glycerol, pH 7.3.
Isotype	IgG
Molecular Weight	Protein Mw: 53kDa Observed Mw: 68kDa
Storage Instruction	Store at -20°C for up to 1 year from the date of receipt, and avoid repeat freeze-thaw cycles.

TARGET INFORMATION

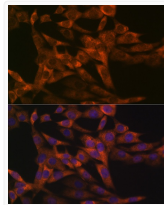
Gene ID	3664
Gene Symbol	IRF6
UniProt ID	IRF6_HUMAN
Immunogen Region	368-467
Immunogen Sequence	PFEIYLCFGEWPDGKPLER KLILVQVIPVARMYEMFS GDFTRSFDSGSRVRLQISTPD IKDNIVAQLKQLYRILQTQE SWQPMQPTPSMQLPALPPQ
Specificity	A synthetic peptide corresponding to a sequence within amino acids 368-467 of human IRF6 (O14896).

ADDITIONAL INFORMATION

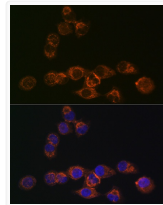
Note STRICTLY FOR FURTHER SCIENTIFIC RESEARCH USE ONLY (RUO). MUST NOT TO BE USED IN DIAGNOSTIC OR THERAPEUTIC APPLICATIONS.



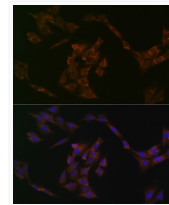
Immunoprecipitation analysis of 300 Mu g extracts of HepG2 cells using 3 Mu g IRF6 antibody (STJ11101837). Western blot was performed from the immunoprecipitate using IRF6 antibody (STJ11101837) at a dilution of 1:1000.



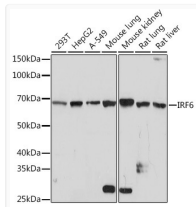
Immunofluorescence analysis of NIH-3T3 cells using IRF6 Rabbit monoclonal antibody (STJ11101837) at dilution of 1:100 (40x lens). Secondary antibody: Cy3 Goat Anti-Rabbit IgG (H+L) at 1:500 dilution. Blue: DAPI for nuclear staining.



Immunofluorescence analysis of HeLa cells using IRF6 Rabbit monoclonal antibody (STJ11101837) at dilution of 1:100 (40x lens). Secondary antibody: Cy3 Goat Anti-Rabbit IgG (H+L) at 1:500 dilution. Blue: DAPI for nuclear staining.



Immunofluorescence analysis of C6 cells using IRF6 Rabbit monoclonal antibody (STJ11101837) at dilution of 1:100 (40x lens). Secondary antibody: Cy3 Goat Anti-Rabbit IgG (H+L) at 1:500 dilution. Blue: DAPI for nuclear staining.



Western blot analysis of various lysates using IRF6 Rabbit monoclonal antibody (STJ11101837) at 1:1000 dilution. Secondary antibody: HRP Goat Anti-Rabbit IgG (H+L) (STJS000856) at 1:10000 dilution. Lysates/proteins: 25 Mu g per lane. Blocking buffer: 3% nonfat dry milk in TBST. Detection: ECL Basic Kit. Exposure time: 3min.