

## Anti-TFAM antibody (100-200) [S6MR] (STJ11101836)

### GENERAL INFORMATION

Product Type	Primary antibodies
Applications	WB/IHC-P/IF/ICC/ELISA
Host / Source	Rabbit
Reactivity	Human/Mouse/Rat

### PRODUCT PROPERTIES

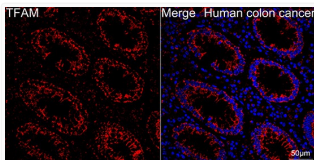
Clonality	Monoclonal
Concentration	Lot specific
Conjugation	Unconjugated
Purification	Affinity purification
Dilution Range	WB:1:1000-1:5000 IHC-P:1:1000-1:4000 IF/ICC:1:200-1:800 ELISA:Recommended starting concentration is 1 $\mu$ g/mL. Please optimize the concentration based on your specific assay requirements.
Formulation	PBS with 0.05% Proclin300, 0.05% BSA, 50% Glycerol, pH 7.3.
Isotype	IgG
Molecular Weight	Protein Mw: 29kDa Observed Mw: 26kDa
Storage Instruction	Store at -20°C for up to 1 year from the date of receipt, and avoid repeat freeze-thaw cycles.

### TARGET INFORMATION

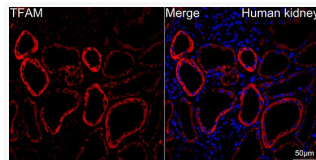
Gene ID	<a href="#">7019</a>
Gene Symbol	<a href="#">TFAM</a>
UniProt ID	<a href="#">TFAM_HUMAN</a>
Immunogen Region	100-200
Immunogen Sequence	QDAYRAEWQVYKKEISRFKELTPSQIMSLEKEIMDKHLK RKAMTKKKKELTLLGPKRPR SAYNVVYAERFQEAQKGDSPQ EKLKTVKENWKNLSDSEKEL Y
Specificity	A synthetic peptide corresponding to a sequence within amino acids 100-200 of human TFAM (NP_003192.1).

### ADDITIONAL INFORMATION

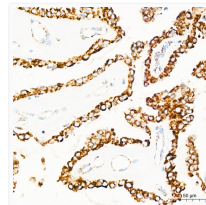
Note STRICTLY FOR FURTHER SCIENTIFIC RESEARCH USE ONLY (RUO). MUST NOT TO BE USED IN DIAGNOSTIC OR THERAPEUTIC APPLICATIONS.



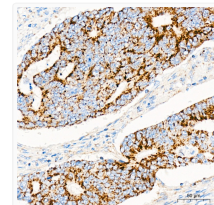
Confocal imaging of paraffin-embedded Human colon cancer tissue using TFAM Rabbit monoclonal antibody (STJ11101836, dilution 1:200) followed by a further incubation with Cy3 Goat Anti-Rabbit IgG (H+L) (dilution 1:500) (Red). DAPI was used for nuclear staining (Blue). Objective: 40x. Perform high pressure antigen retrieval with 0.01 M citrate buffer (pH 6.0) prior to IF staining.



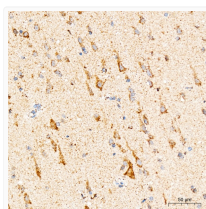
Confocal imaging of paraffin-embedded Human kidney tissue using TFAM Rabbit monoclonal antibody (STJ11101836, dilution 1:200) followed by a further incubation with Cy3 Goat Anti-Rabbit IgG (H+L) (dilution 1:500) (Red). DAPI was used for nuclear staining (Blue). Objective: 40x. Perform high pressure antigen retrieval with 0.01 M citrate buffer (pH 6.0) prior to IF staining.



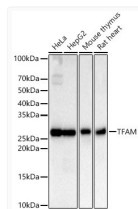
Immunohistochemistry analysis of TFAM in paraffin-embedded human thyroid cancer tissue using TFAM Rabbit monoclonal antibody (STJ11101836) at a dilution of 1:1000 (40x lens). High pressure antigen retrieval was performed with 0.01 M citrate buffer (pH 6.0) prior to immunohistochemistry staining.



Immunohistochemistry analysis of TFAM in paraffin-embedded human colon carcinoma tissue using TFAM Rabbit monoclonal antibody (STJ11101836) at a dilution of 1:1000 (40x lens). High pressure antigen retrieval was performed with 0.01 M citrate buffer (pH 6.0) prior to immunohistochemistry staining.



Immunohistochemistry analysis of TFAM in paraffin-embedded human brain tissue using TFAM Rabbit monoclonal antibody (STJ11101836) at a dilution of 1:1000 (40x lens). High pressure antigen retrieval was performed with 0.01 M citrate buffer (pH 6.0) prior to immunohistochemistry staining.



Western blot analysis of various lysates, using TFAM Rabbit polyclonal antibody (STJ11101836) at 1:6000 dilution. Secondary antibody: HRP Goat Anti-Rabbit IgG (H+L) (STJS000856) at 1:10000 dilution. Lysates/proteins: 25  $\mu$ g per lane. Blocking buffer: 3% nonfat dry milk in TBST. Detection: ECL Basic Kit. Exposure time: 30s.