

Anti-FLOT1 antibody (328-427) [S5MR] (STJ11101835)

GENERAL INFORMATION

Product Type	Primary antibodies
Applications	WB/IHC-P/ELISA
Host / Source	Rabbit
Reactivity	Human/Mouse/Rat

PRODUCT PROPERTIES

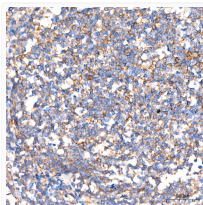
Clonality	Monoclonal
Concentration	Lot specific
Conjugation	Unconjugated
Purification	Affinity purification
Dilution Range	WB:1:1000-1:4000 IHC-P:1:200-1:800 ELISA:Recommended starting concentration is 1 µg/mL. Please optimize the concentration based on your specific assay requirements.
Formulation	PBS with 0.02% Sodium Azide, 0.05% BSA, 50% Glycerol, pH 7.3.
Isotype	IgG
Molecular Weight	Protein Mw: 47kDa Observed Mw: 47kDa
Storage Instruction	Store at -20°C for up to 1 year from the date of receipt, and avoid repeat freeze-thaw cycles.

TARGET INFORMATION

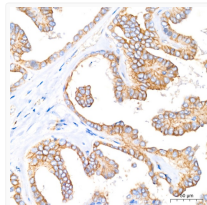
Gene ID	10211
Gene Symbol	FLOT1
UniProt ID	FLOT1_HUMAN
Immunogen Region	328-427
Immunogen Sequence	GARARAEAEQMAKKAEAFQL YQEAAQLDMLLEKLPQVAEE ISGPLTSANKITLVSSGSGT MGAAKVTGEVLDILTRLPEV VERLTGVSISQVNHKPLRTA
Specificity	A synthetic peptide corresponding to a sequence within amino acids 328-427 of human Flotillin 1 (O75955).

ADDITIONAL INFORMATION

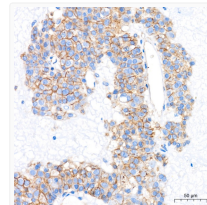
Note STRICTLY FOR FURTHER SCIENTIFIC RESEARCH USE ONLY (RUO). MUST NOT TO BE USED IN DIAGNOSTIC OR THERAPEUTIC APPLICATIONS.



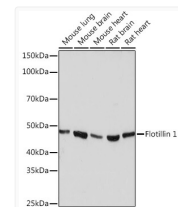
Immunohistochemistry analysis of Flotillin 1 in paraffin-embedded human tonsil tissue using Flotillin 1 Rabbit monoclonal antibody (STJ11101835) at a dilution of 1:200 (40x lens). High pressure antigen retrieval was performed with 0.01 M citrate buffer (pH 6.0) prior to immunohistochemistry staining.



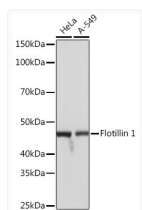
Immunohistochemistry analysis of Flotillin 1 in paraffin-embedded human thyroid cancer tissue using Flotillin 1 Rabbit monoclonal antibody (STJ11101835) at a dilution of 1:200 (40x lens). High pressure antigen retrieval was performed with 0.01 M citrate buffer (pH 6.0) prior to immunohistochemistry staining.



Immunohistochemistry analysis of Flotillin 1 in paraffin-embedded human liver cancer tissue using Flotillin 1 Rabbit monoclonal antibody (STJ11101835) at a dilution of 1:200 (40x lens). High pressure antigen retrieval was performed with 0.01 M citrate buffer (pH 6.0) prior to immunohistochemistry staining.



Western blot analysis of various lysates, using Flotillin 1 Rabbit monoclonal antibody (STJ11101835) at 1:1000 dilution. Secondary antibody: HRP Goat Anti-Rabbit IgG (H+L) (STJS000856) at 1:10000 dilution. Lysates/proteins: 25 µg per lane. Blocking buffer: 3% nonfat dry milk in TBST. Detection: ECL Basic Kit. Exposure time: 3min.



Western blot analysis of various lysates, using Flotillin 1 Rabbit monoclonal antibody (STJ11101835) at 1:1000 dilution. Secondary antibody: HRP Goat Anti-Rabbit IgG (H+L) (STJS000856) at 1:10000 dilution. Lysates/proteins: 25 µg per lane. Blocking buffer: 3% nonfat dry milk in TBST. Detection: ECL Basic Kit. Exposure time: 1s.