

## Anti-RAD51 antibody (1-100) [S3MR] (STJ11101833)

### GENERAL INFORMATION

Product Type	Primary antibodies
Applications	WB/ELISA/ChIP
Host / Source	Rabbit
Reactivity	Human/Mouse/Rat

### PRODUCT PROPERTIES

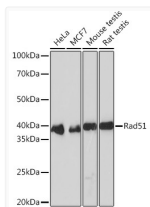
Clonality	Monoclonal
Concentration	Lot specific
Conjugation	Unconjugated
Purification	Affinity purification
Dilution Range	WB:1:500-1:2000 ELISA:Recommended starting concentration is 1 Mu g/mL. Please optimize the concentration based on your specific assay requirements. ChIP:5 Mu g antibody for 10 Mu g-15 Mu g of Chromatin
Formulation	PBS with 0.02% Sodium Azide, 0.05% BSA, 50% Glycerol, pH 7.3.
Isotype	IgG
Molecular Weight	Protein Mw: 37kDa Observed Mw: 37kDa
Storage Instruction	Store at -20°C for up to 1 year from the date of receipt, and avoid repeat freeze-thaw cycles.

### TARGET INFORMATION

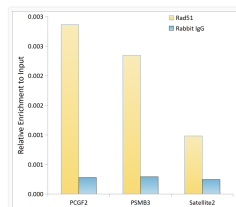
Gene ID	<a href="#">5888</a>
Gene Symbol	<a href="#">RAD51</a>
UniProt ID	<a href="#">RAD51_HUMAN</a>
Immunogen Region	1-100
Immunogen Sequence	MAMQMQLEANADTSVEEESF GPQPISRLEQCGINANDVKK LEEAGFHTVEAVAYAPKKEL INIKGISEAKADKILAEAAK LVPMGFTTATEFHQRSEII
Specificity	A synthetic peptide corresponding to a sequence within amino acids 1-100 of human Rad51 (Q06609).

### ADDITIONAL INFORMATION

Note STRICTLY FOR FURTHER SCIENTIFIC RESEARCH USE ONLY (RUO). MUST NOT TO BE USED IN DIAGNOSTIC OR THERAPEUTIC APPLICATIONS.



Western blot analysis of extracts of various cell lines, using Rad51 rabbit monoclonal antibody (STJ11101833) at 1:1000 dilution. Secondary antibody: HRP Goat Anti-rabbit IgG (H+L) (STJS000856) at 1:10000 dilution. Lysates/proteins: 25 Mu g per lane. Blocking buffer: 3% non-fat dry milk in TBST. Detection: ECL Basic Kit. Exposure time: 3min.



Chromatin immunoprecipitation analysis of extracts of HepG2 cells, using Rad51 rabbit monoclonal antibody (STJ11101833) and rabbit IgG. The amount of immunoprecipitated DNA was checked by quantitative PCR. Histogram was constructed by the ratios of the immunoprecipitated DNA to the input.