

Anti-VCL antibody (800-900) [S2MR] (STJ11101832)

GENERAL INFORMATION

Product Type	Primary antibodies
Applications	WB/IF/ICC/ELISA
Host / Source	Rabbit
Reactivity	Human/Mouse/Rat

PRODUCT PROPERTIES

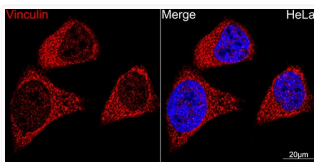
Clonality	Monoclonal
Concentration	Lot specific
Conjugation	Unconjugated
Purification	Affinity purification
Dilution Range	WB:1:300000-1:1280000 IF/CC:1:800-1:3200 ELISA:Recommended starting concentration is 1 Mu g/mL. Please optimize the concentration based on your specific assay requirements.
Formulation	PBS with 0.05% Proclin300, 0.05% BSA, 50% Glycerol, pH7.3.
Isotype	IgG
Molecular Weight	Protein Mw: 124kDa Observed Mw: 124kDa
Storage Instruction	Store at -20°C for up to 1 year from the date of receipt, and avoid repeat freeze-thaw cycles.

TARGET INFORMATION

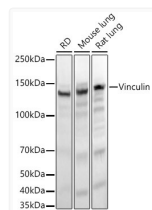
Gene ID	7414
Gene Symbol	VCL
UniProt ID	VINC_HUMAN
Immunogen Region	800-900
Immunogen Sequence	DAKAVAGNISDPGLQKSFLD SGYRILGAVAKVREAFQPQE PDFPPPPDLEQLRLTDELA PPKPPLPEGEVPPRPPPE EKDEEFPEQKAGEVINQPM M
Specificity	A synthetic peptide corresponding to a sequence within amino acids 800-900 of human Vinculin (NP_054706.1).

ADDITIONAL INFORMATION

Note STRICTLY FOR FURTHER SCIENTIFIC RESEARCH USE ONLY (RUO). MUST NOT TO BE USED IN DIAGNOSTIC OR THERAPEUTIC APPLICATIONS.



Confocal imaging of HeLa cells using Vinculin Rabbit monoclonal antibody (STJ11101832, dilution 1:100) (Red). DAPI was used for nuclear staining (blue). Objective: 60x.



Western blot analysis of various lysates, using Vinculin Rabbit monoclonal antibody (STJ11101832) at 1:250000 dilution. Secondary antibody: HRP Goat Anti-Rabbit IgG (H+L) (STJS000856) at 1:10000 dilution. Lysates/proteins: 25 Mu g per lane. Blocking buffer: 3% nonfat dry milk in TBST. Detection: ECL Basic Kit. Exposure time: 10s.