

## Anti-REST antibody (100-200) [S3MR] (STJ11101823)

### GENERAL INFORMATION

Product Type	Primary antibodies
Applications	WB/IP/ELISA
Host / Source	Rabbit
Reactivity	Human/Mouse/Rat

### PRODUCT PROPERTIES

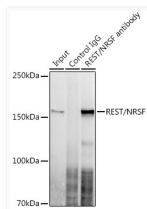
Clonality	Monoclonal
Concentration	Lot specific
Conjugation	Unconjugated
Purification	Affinity purification
Dilution Range	WB:1:1000-1:6000 IP:0.5 Mu g-4 Mu g antibody for 200 Mu g-400 Mu g extracts of whole cells ELISA:Recommended starting concentration is 1 Mu g/mL. Please optimize the concentration based on your specific assay requirements.
Formulation	PBS with 0.02% Sodium Azide, 0.05% BSA, 50% Glycerol, pH 7.3.
Isotype	IgG
Molecular Weight	Protein Mw: 122kDa Observed Mw: 170kDa
Storage Instruction	Store at -20°C for up to 1 year from the date of receipt, and avoid repeat freeze-thaw cycles.

### TARGET INFORMATION

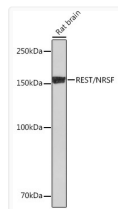
Gene ID	<a href="#">5978</a>
Gene Symbol	<a href="#">REST</a>
UniProt ID	<a href="#">REST_HUMAN</a>
Immunogen Region	100-200
Immunogen Sequence	KGEPHGLNEMELRSLELSVV EPQPVEASGAPDIYSSNKD LPPETPGAEDKKGSSKTKPF RCKPCQYEAEESEEQFVHHIR VHSAKKFFVEESA EKQAKAR E
Specificity	A synthetic peptide corresponding to a sequence within amino acids 100-200 of human REST/NRSF (Q13127).

### ADDITIONAL INFORMATION

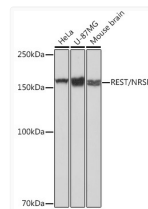
Note **STRICTLY FOR FURTHER SCIENTIFIC RESEARCH USE ONLY (RUO). MUST NOT TO BE USED IN DIAGNOSTIC OR THERAPEUTIC APPLICATIONS.**



Immunoprecipitation analysis of 300 Mu g extracts of U-87MG cells using 3 Mu g REST/NRSF antibody (STJ11101823). Western blot was performed from the immunoprecipitate using REST/NRSF antibody (STJ11101823) at a dilution of 1:1000.



Western blot analysis of lysates from Rat brain, using REST/NRSF Rabbit monoclonal antibody (STJ11101823) at 1: 1000 dilution. Secondary antibody: HRP Goat Anti-Rabbit IgG (H+L) (STJS000856) at 1:10000 dilution. Lysates/proteins: 25 Mu g per lane. Blocking buffer: 3% nonfat dry milk in TBST. Detection: ECL Basic Kit. Exposure time: 90s.



Western blot analysis of various lysates using REST/NRSF Rabbit monoclonal antibody (STJ11101823) at 1: 1000 dilution. Secondary antibody: HRP Goat Anti-Rabbit IgG (H+L) (STJS000856) at 1:10000 dilution. Lysates/proteins: 25 Mu g per lane. Blocking buffer: 3% nonfat dry milk in TBST. Detection: ECL Basic Kit. Exposure time: 1s.