

## Anti-POLB antibody (236-335) [S1MR] (STJ11101821)

### GENERAL INFORMATION

Product Type	Primary antibodies
Applications	WB/IHC-P/ELISA
Host / Source	Rabbit
Reactivity	Human/Mouse/Rat

### PRODUCT PROPERTIES

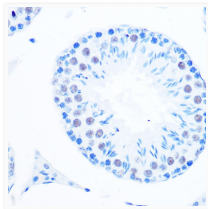
Clonality	Monoclonal
Concentration	Lot specific
Conjugation	Unconjugated
Purification	Affinity purification
Dilution Range	WB:1:1000-1:6000 IHC-P:1:200-1:800 ELISA:Recommended starting concentration is 1 µg/mL. Please optimize the concentration based on your specific assay requirements.
Formulation	PBS with 0.02% Sodium Azide, 0.05% BSA, 50% Glycerol, pH 7.3.
Isotype	IgG
Molecular Weight	Protein Mw: 38kDa Observed Mw: 42kDa
Storage Instruction	Store at -20°C for up to 1 year from the date of receipt, and avoid repeat freeze-thaw cycles.

### TARGET INFORMATION

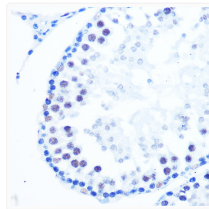
Gene ID	<a href="#">5423</a>
Gene Symbol	<a href="#">POLB</a>
UniProt ID	<a href="#">DPOLB_HUMAN</a>
Immunogen Region	236-335
Immunogen Sequence	MGVCQLPSKNDEKEYPHRRI DIRLIPKDQYYCGVLYFTGS DIFNKNMRAHALEKGFINE YTIRPLGVTGVAGEPLPVDSEKIDIFDIQWKYREPDKRSE
Specificity	A synthetic peptide corresponding to a sequence within amino acids 236-335 of human DNA Polymerase beta (P06746).

### ADDITIONAL INFORMATION

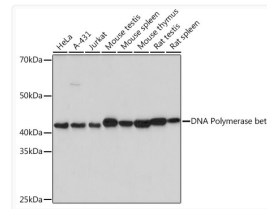
Note STRICTLY FOR FURTHER SCIENTIFIC RESEARCH USE ONLY (RUO). MUST NOT TO BE USED IN DIAGNOSTIC OR THERAPEUTIC APPLICATIONS.



Immunohistochemistry analysis of paraffin-embedded mouse testis using DNA Polymerase beta Rabbit monoclonal antibody (STJ11101821) at dilution of 1:100 (40x lens). Perform microwave antigen retrieval with 10 mM PBS buffer pH 7.2 before commencing with immunohistochemistry staining protocol.



Immunohistochemistry analysis of paraffin-embedded rat testis using DNA Polymerase beta Rabbit monoclonal antibody (STJ11101821) at dilution of 1:100 (40x lens). Perform microwave antigen retrieval with 10 mM PBS buffer pH 7.2 before commencing with immunohistochemistry staining protocol.



Western blot analysis of extracts of various cell lines, using DNA Polymerase beta Rabbit monoclonal antibody (STJ11101821) at 1:1000 dilution. Secondary antibody: HRP Goat Anti-Rabbit IgG (H+L) (STJS000856) at 1:10000 dilution. Lysates/proteins: 25 µg per lane. Blocking buffer: 3% nonfat dry milk in TBST. Detection: ECL Basic Kit. Exposure time: 5s.