

## Anti-TGFBI antibody (50-150) [S0MR] (STJ11101820)

### GENERAL INFORMATION

Product Type	Primary antibodies
Applications	WB/IHC-P/ELISA
Host / Source	Rabbit
Reactivity	Human/Mouse/Rat

### PRODUCT PROPERTIES

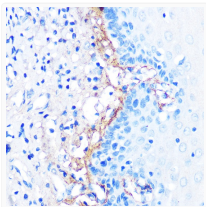
Clonality	Monoclonal
Concentration	Lot specific
Conjugation	Unconjugated
Purification	Affinity purification
Dilution Range	WB:1:500-1:2000 IHC-P:1:50-1:200 ELISA:Recommended starting concentration is 1 Mu g/mL. Please optimize the concentration based on your specific assay requirements.
Formulation	PBS with 0.02% Sodium Azide, 0.05% BSA, 50% Glycerol, pH 7.3.
Isotype	IgG
Molecular Weight	Protein Mw: 75kDa Observed Mw: 66kDa
Storage Instruction	Store at -20°C for up to 1 year from the date of receipt, and avoid repeat freeze-thaw cycles.

### TARGET INFORMATION

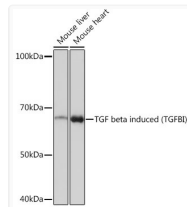
Gene ID	<a href="#">7045</a>
Gene Symbol	<a href="#">TGFB1</a>
UniProt ID	<a href="#">BGH3_HUMAN</a>
Immunogen Region	50-150
Immunogen Sequence	AVQKVIQTNRKYFTNCKQWY QRKICGKSTVISYECCPGYE KVPGEKGCPAALPLSNLYET LGVVGSTTTQLYDRTEKLR PEMEGPGSFTIFAPSNEAWA S
Specificity	A synthetic peptide corresponding to a sequence within amino acids 50-150 of human TGF beta induced (TGFB1) (Q15582).

### ADDITIONAL INFORMATION

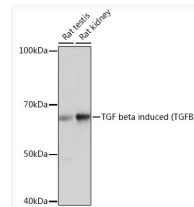
Note STRICTLY FOR FURTHER SCIENTIFIC RESEARCH USE ONLY (RUO). MUST NOT TO BE USED IN DIAGNOSTIC OR THERAPEUTIC APPLICATIONS.



Immunohistochemistry analysis of TGF beta induced (TGFB1) in paraffin-embedded human esophageal using TGF beta induced TGF beta induced (TGFB1) Rabbit monoclonal antibody (STJ11101820) at dilution of 1:100 (40x lens). Perform microwave antigen retrieval with 10 mM PBS buffer pH 7. 2 before commencing with immunohistochemistry staining protocol.



Western blot analysis of various lysates using TGF beta induced TGF beta induced (TGFB1) Rabbit monoclonal antibody (STJ11101820) at 1: 1000 dilution. Secondary antibody: HRP Goat Anti-Rabbit IgG (H+L) (STJS000856) at 1:10000 dilution. Lysates/proteins: 25 Mu g per lane. Blocking buffer: 3% nonfat dry milk in TBST. Detection: ECL Basic Kit. Exposure time: 3min.



Western blot analysis of various lysates using TGF beta induced TGF beta induced (TGFB1) Rabbit monoclonal antibody (STJ11101820) at 1: 1000 dilution. Secondary antibody: HRP Goat Anti-Rabbit IgG (H+L) (STJS000856) at 1:10000 dilution. Lysates/proteins: 25 Mu g per lane. Blocking buffer: 3% nonfat dry milk in TBST. Detection: ECL Basic Kit. Exposure time: 10s.