

Anti-TPT1 antibody (1-100) [S7MR] (STJ11101817)

GENERAL INFORMATION

Product Type	Primary antibodies
Applications	WB/IHC-P/IP/ELISA
Host / Source	Rabbit
Reactivity	Human/Mouse/Rat

PRODUCT PROPERTIES

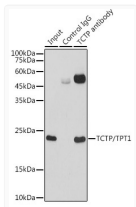
Clonality	Monoclonal
Concentration	Lot specific
Conjugation	Unconjugated
Purification	Affinity purification
Dilution Range	WB:1:500-1:2000 IHC-P:1:50-1:200 IP:0.5 Mu g-4 Mu g antibody for 200 Mu g-400 Mu g extracts of whole cells ELISA:Recommended starting concentration is 1 Mu g/mL. Please optimize the concentration based on your specific assay requirements
Formulation	PBS with 0.02% Sodium Azide, 0.05% BSA, 50% Glycerol, pH 7.3.
Isotype	IgG
Molecular Weight	Protein Mw: 20kDa Observed Mw: 23kDa
Storage Instruction	Store at -20°C for up to 1 year from the date of receipt, and avoid repeat freeze-thaw cycles.

TARGET INFORMATION

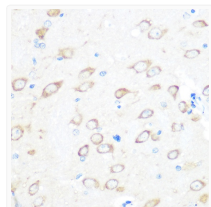
Gene ID	7178
Gene Symbol	TPT1
UniProt ID	TCTP_HUMAN
Immunogen Region	1-100
Immunogen Sequence	MIIYRDLISHDEMFSDIYKI REIADGLCLEVEGKMVSRTE GNIDDSLIGNNASAEPEGE GTSTVITGVDIVMNHHLQE TSFTKEAYKKYIKDYMKSIK
Specificity	A synthetic peptide corresponding to a sequence within amino acids 1-100 of human TCTP/TPT1 (P13693).

ADDITIONAL INFORMATION

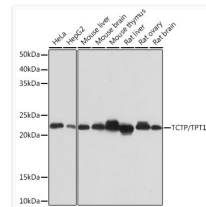
Note STRICTLY FOR FURTHER SCIENTIFIC RESEARCH USE ONLY (RUO). MUST NOT TO BE USED IN DIAGNOSTIC OR THERAPEUTIC APPLICATIONS.



Immunoprecipitation analysis of 300 Mu g extracts of HeLa cells using 3 Mu g TCTP/TPT1 antibody (STJ11101817). Western blot was performed from the immunoprecipitate using TCTP/TPT1 antibody (STJ11101817) at a dilution of 1:1000.



Immunohistochemistry analysis of TCTP/TPT1 in paraffin-embedded rat brain using TCTP/TPT1 Rabbit monoclonal antibody (STJ11101817) at dilution of 1:100 (40x lens). Perform microwave antigen retrieval with 10 mM PBS buffer pH 7.2 before commencing with immunohistochemistry staining protocol.



Western blot analysis of various lysates using TCTP/TPT1 Rabbit monoclonal antibody (STJ11101817) at 1:1000 dilution. Secondary antibody: HRP Goat Anti-Rabbit IgG (H+L) (STJS000856) at 1:10000 dilution. Lysates/proteins: 25 Mu g per lane. Blocking buffer: 3% nonfat dry milk in TBST. Detection: ECL Basic Kit. Exposure time: 10s.