

Anti-EIF2AK4 antibody (1-300) [S9MR] (STJ11101809)

GENERAL INFORMATION

Product Type	Primary antibodies
Applications	WB/IHC-P/ELISA
Host / Source	Rabbit
Reactivity	Human/Mouse/Rat

PRODUCT PROPERTIES

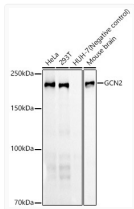
Clonality	Monoclonal
Concentration	Lot specific
Conjugation	Unconjugated
Purification	Affinity purification
Dilution Range	WB:1:1000-1:4000 IHC-P:1:200-1:2000 ELISA:Recommended starting concentration is 1 µg/mL. Please optimize the concentration based on your specific assay requirements.
Formulation	PBS with 0.05% Proclin300, 0.05% BSA, 50% Glycerol, pH 7.3.
Isotype	IgG
Molecular Weight	Protein Mw: 69kDa/183kDa/186kDa Observed Mw: 220kDa
Storage Instruction	Store at -20°C for up to 1 year from the date of receipt, and avoid repeat freeze-thaw cycles.

TARGET INFORMATION

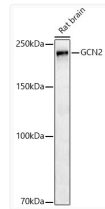
Gene ID	440275
Gene Symbol	EIF2AK4
UniProt ID	E2AK4_HUMAN
Immunogen Region	1-300
Immunogen Sequence	MAGGGRGAPGRGRDEPPESYP QRQDHELQALEAIYGADFQD LRPDACGPVKEPPEINLVLY PQGLTGEEVYVKVDLRVKCP PTYPDVVPEIELKNAKGLSN ESNLLKSRLEELAKKHCGE VMIFELAYHVQSFLSEHNKP PPKSFHEEMLERRAQEEQQR LLEAKRKEEQEQREILHEIQ RRKEEIKEEKRKRKEMAKQER LEIASLSNQDHTSKKDPGGH RTAAAILHGGSPDFVGNKGK
Specificity	Recombinant fusion protein containing a sequence corresponding to amino acids 1-300 of human GCN2 (NP_001013725.2).

ADDITIONAL INFORMATION

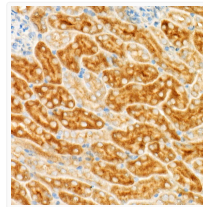
Note STRICTLY FOR FURTHER SCIENTIFIC RESEARCH USE ONLY (RUO). MUST NOT TO BE USED IN DIAGNOSTIC OR THERAPEUTIC APPLICATIONS.



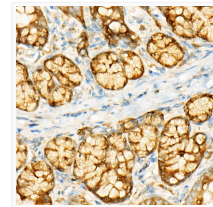
Western blot analysis of various lysates, using GCN2 rabbit monoclonal antibody (STJ11101809) at 1:1000 dilution. Secondary antibody: HRP Goat Anti-rabbit IgG (H+L) (STJS000856) at 1:10000 dilution. Lysates/proteins: 25 µg per lane. Blocking buffer: 3% non-fat dry milk in TBST. Detection: ECL Basic Kit. Exposure time: 30s.



Western blot analysis of Rat brain, using GCN2 rabbit monoclonal antibody (STJ11101809) at 1:1000 dilution. Secondary antibody: HRP Goat Anti-rabbit IgG (H+L) (STJS000856) at 1:10000 dilution. Lysates/proteins: 25 µg per lane. Blocking buffer: 3% non-fat dry milk in TBST. Detection: ECL Basic Kit. Exposure time: 90s.



Immunohistochemistry analysis of paraffin-embedded mouse kidney using GCN2 rabbit monoclonal antibody (STJ11101809) at dilution of 1:500 (40x lens). Perform high pressure antigen retrieval with 10 mM citrate buffer pH 6.0 before commencing with immunohistochemistry staining protocol.



Immunohistochemistry analysis of paraffin-embedded rat intestine using GCN2 rabbit monoclonal antibody (STJ11101809) at dilution of 1:500 (40x lens). Perform high pressure antigen retrieval with 10 mM citrate buffer pH 6.0 before commencing with immunohistochemistry staining protocol.