

## Anti-SMURF2 antibody (201-290) [S3MR] (STJ11101803)

### GENERAL INFORMATION

Product Type	Primary antibodies
Applications	WB/IHC-P/IF/ICC/IP/ELISA
Host / Source	Rabbit
Reactivity	Human/Mouse

### PRODUCT PROPERTIES

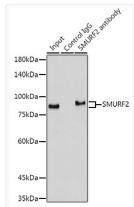
Clonality	Monoclonal
Concentration	Lot specific
Conjugation	Unconjugated
Purification	Affinity purification
Dilution Range	WB:1:500-1:2000 IHC-P:1:200-1:800 IF/CC:1:50-1:200 IP:0.5 Mu g-4 Mu g antibody for 400 Mu g-600 Mu g extracts of whole cells ELISA:Recommended starting concentration is 1 Mu g/mL. Please optimize the concentration based on your speci
Formulation	PBS with 0.02% Sodium Azide, 0.05% BSA, 50% Glycerol, pH 7.3.
Isotype	IgG
Molecular Weight	Protein Mw: 86kDa Observed Mw: 80kDa
Storage Instruction	Store at -20°C for up to 1 year from the date of receipt, and avoid repeat freeze-thaw cycles.

### TARGET INFORMATION

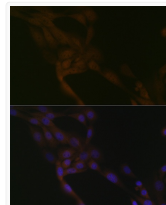
Gene ID	<a href="#">64750</a>
Gene Symbol	<a href="#">SMURF2</a>
UniProt ID	<a href="#">SMUF2_HUMAN</a>
Immunogen Region	201-290
Immunogen Sequence	PLSCFVDENTPISGTLNGATC GQSSDPRLAERRVRSQRHRN YMSRTHLHTPPDLPEGYEQR TTQQGQVYFLHTQTGVSTWH DPRVPRDLSN
Specificity	Recombinant fusion protein containing a sequence corresponding to amino acids 201-290 of human SMURF2 (Q9HAU4).

### ADDITIONAL INFORMATION

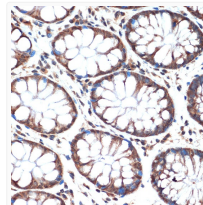
Note STRICTLY FOR FURTHER SCIENTIFIC RESEARCH USE ONLY (RUO). MUST NOT TO BE USED IN DIAGNOSTIC OR THERAPEUTIC APPLICATIONS.



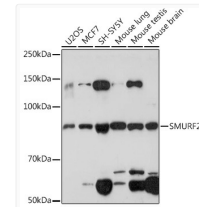
Immunoprecipitation analysis of 300 Mu g extracts of Mouse lung using 3 Mu g SMURF2 antibody (STJ11101803). Western blot was performed from the immunoprecipitate using SMURF2 antibody (STJ11101803) at a dilution of 1:1000.



Immunofluorescence analysis of NIH-3T3 cells using SMURF2 Rabbit monoclonal antibody (STJ11101803) at dilution of 1:100 (40x lens). Secondary antibody: Cy3 Goat Anti-Rabbit IgG (H+L) at 1:500 dilution. Blue: DAPI for nuclear staining.



Immunohistochemistry analysis of SMURF2 in paraffin-embedded human colon using SMURF2 Rabbit monoclonal antibody (STJ11101803) at dilution of 1:100 (40x lens). Perform microwave antigen retrieval with 10 mM Tris/EDTA buffer pH 9.0 before commencing with immunohistochemistry staining protocol.



Western blot analysis of various lysates using SMURF2 Rabbit monoclonal antibody (STJ11101803) at 1:1000 dilution. Secondary antibody: HRP Goat Anti-Rabbit IgG (H+L) (STJS000856) at 1:10000 dilution. Lysates/proteins: 25 Mu g per lane. Blocking buffer: 3% nonfat dry milk in TBST. Detection: ECL Enhanced Kit. Exposure time: 3min.