

Anti-SARS-CoV-2 Spike antibody (600-700) (STJ11101794)

GENERAL INFORMATION

Product Type	Primary antibodies
Applications	WB/DB/IF/ICC/IP/ELISA
Host / Source	Rabbit
Reactivity	SARS-CoV-2

PRODUCT PROPERTIES

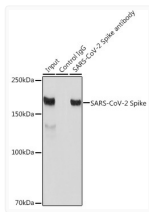
Clonality	Polyclonal
Concentration	Lot specific
Conjugation	Unconjugated
Purification	Affinity purification
Dilution Range	WB:1:500-1:1000 DB:1:500-1:2000 IF/CC:1:50-1:200 IP:0.5 Mu g-4 Mu g antibody for 200 Mu g-400 Mu g extracts of whole cells ELISA:Recommended starting concentration is 1 Mu g/mL. Please optimize the concentration based on your specific
Formulation	PBS with 0.05% Proclin300, 50% Glycerol, pH 7.3.
Isotype	IgG
Molecular Weight	Protein Mw: 141kDa Observed Mw: 110kDa/180kDa
Storage Instruction	Store at -20°C for up to 1 year from the date of receipt, and avoid repeat freeze-thaw cycles.

TARGET INFORMATION

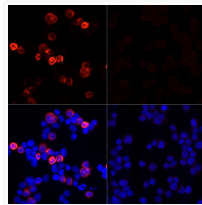
Immunogen Region	600-700
Immunogen Sequence	PGTNTSNQVAVLYQDVNCTE VPVAIHADQLTPTWRVYSTG SNVFQTRAGCLIGAEHVNNS YECDIPIGAGICASYQTQTN SPRRARSVASQSIAYTMSL G
Specificity	A synthetic peptide corresponding to a sequence within amino acids 600-700 of coronavirus Spike (YP_009724390.1).

ADDITIONAL INFORMATION

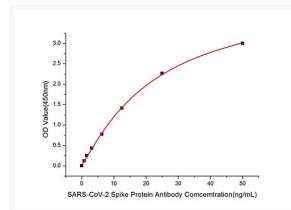
Note STRICTLY FOR FURTHER SCIENTIFIC RESEARCH USE ONLY (RUO). MUST NOT TO BE USED IN DIAGNOSTIC OR THERAPEUTIC APPLICATIONS.



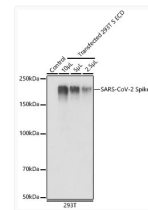
Immunoprecipitation analysis of 300 Mu g extracts of 293T cells using 3 Mu g SARS-CoV-2 Spike antibody (STJ11101794). Western blot was performed from the immunoprecipitate using SARS-CoV-2 Spike antibody (STJ11101794) at a dilution of 1:1000.



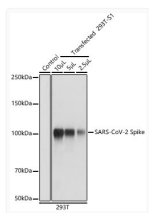
Immunofluorescence analysis of 293T cells transfected with SARS-CoV-2 Spike protein and untreated 293T cells use SARS-CoV-2 Spike Rabbit polyclonal antibody (STJ11101794) at dilution of 1:100 (40x lens). Secondary antibody: Cy3 Goat Anti-Rabbit IgG (H+L) at 1:500 dilution. Blue: DAPI for nuclear staining.



Immobilized Recombinant SARS-COV-2 S1+S2 ECD (S-ECD) Protein (RP01283) at 1 Mu g/mL (100 Mu L/well) can bind SARS-CoV-2 Spike Rabbit polyclonal antibody (STJ11101794) with a linear range of 0. 78-50ng/mL.



Western blot analysis of extracts of 293T and transfected 293T-S ECD (His-tag) , using SARS-CoV-2 Spike Rabbit polyclonal antibody (STJ11101794) at 1:1000 dilution. Lysates/proteins: 25 Mu g per lane. Blocking buffer: 3% nonfat dry milk in TBST. Detection: ECL Basic Kit. Exposure time: 1s.



Western blot analysis of extracts of 293T and transfected 293T-S1 (His-tag) , using SARS-CoV-2 Spike Rabbit polyclonal antibody (STJ11101794) at 1:1000 dilution. Secondary antibody: HRP Goat Anti-Rabbit IgG (H+L) (STJS000856) at 1:10000 dilution. Lysates/proteins: 25 Mu g per lane. Blocking buffer: 3% nonfat dry milk in TBST. Detection: ECL Basic Kit. Exposure time: 1s.