

Anti-SARS-CoV-2 Spike RBD antibody (332-550) (STJ11101792)

GENERAL INFORMATION

Product Type	Primary antibodies
Applications	WB/IF/ICC/IP/ELISA
Host / Source	Rabbit
Reactivity	SARS-CoV-2

PRODUCT PROPERTIES

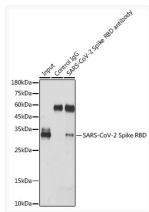
Clonality	Polyclonal
Concentration	Lot specific
Conjugation	Unconjugated
Purification	Affinity purification
Dilution Range	WB:1:500-1:2000 IF/CC:1:50-1:200 IP:0.5 Mu g-4 Mu g antibody for 200 Mu g-400 Mu g extracts of whole cells ELISA:1:50000-1:200000
Formulation	PBS with 0.05% Proclin300, 50% Glycerol, pH7.3.
Isotype	IgG
Molecular Weight	Protein Mw: 141kDa Observed Mw: 30kDa
Storage Instruction	Store at -20°C for up to 1 year from the date of receipt, and avoid repeat freeze-thaw cycles.

TARGET INFORMATION

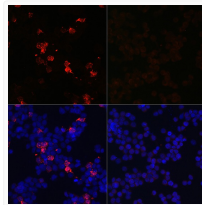
Immunogen Region	332-550
Immunogen Sequence	ITNLCPFGEVFNATRFASVY AWRKRISNCVADYSVLYNS ASFSTFKCYGVSPTKLNLDLC FTNVYADSFVIRGDEVQRQA PGQTGKIADYNYKLPDDFTG CVIAWNSNLDLSDKVGNYNY LYRLFRKSNLKPFFERDISTE IQAGSTPCNGVEGFNCYFP LQSYGFQPTNGVGYQPYRVV VLSFELLHAPATVCGPKKST NLVKNKCVNFNFNGLTGTG
Specificity	Recombinant fusion protein containing a sequence corresponding to amino acids 332-550 of coronavirus Spike RBD (YP_009724390.1).

ADDITIONAL INFORMATION

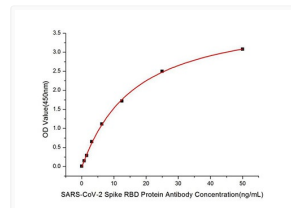
Note **STRICTLY FOR FURTHER SCIENTIFIC RESEARCH USE ONLY (RUO). MUST NOT TO BE USED IN DIAGNOSTIC OR THERAPEUTIC APPLICATIONS.**



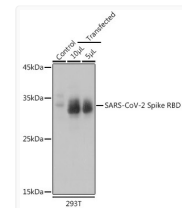
Immunoprecipitation analysis of 300 Mu g extracts of 293T cells using 3 Mu g SARS-CoV-2 Spike RBD antibody (STJ11101792). Western blot was performed from the immunoprecipitate using SARS-CoV-2 Spike RBD antibody (STJ11101792) at a dilution of 1:3000.



Immunofluorescence analysis of 293T-RBD and 293T cells using SARS-CoV-2 Spike RBD Rabbit polyclonal antibody (STJ11101792) at dilution of 1:100 (40x lens). Secondary antibody: Cy3 Goat Anti-Rabbit IgG (H+L) at 1:500 dilution. Blue: DAPI for nuclear staining.



Immobilized Recombinant SARS-COV-2 Spike RBD Protein (RP01278LQ) at 1 Mu g/mL (100 Mu L/well) can bind SARS-CoV-2 Spike RBD Rabbit polyclonal antibody (STJ11101792) with a linear range of 0. 78-50ng/mL.



Western blot analysis of extracts of normal 293T cells and 293T transfected with Spike RBD Protein, using SARS-CoV-2 Spike RBD Rabbit polyclonal antibody (STJ11101792) at 1:1000 dilution. Secondary antibody: HRP Goat Anti-Rabbit IgG (H+L) (STJS000856) at 1:10000 dilution. Lysates/proteins: 25 Mu g per lane. Blocking buffer: 3% nonfat dry milk in TBST. Detection: ECL Basic Kit. Exposure time: 5s.