

Anti-IRF3 antibody (50-150) [S1MR] (STJ11101781)

GENERAL INFORMATION

Product Type	Primary antibodies
Applications	WB/ELISA
Host / Source	Rabbit
Reactivity	Human/Mouse

PRODUCT PROPERTIES

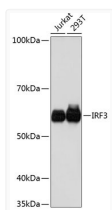
Clonality	Monoclonal
Concentration	Lot specific
Conjugation	Unconjugated
Purification	Affinity purification
Dilution Range	WB:1:1000-1:2000 ELISA:Recommended starting concentration is 1 Mu g/mL. Please optimize the concentration based on your specific assay requirements.
Formulation	PBS with 0.02% Sodium Azide, 0.05% BSA, 50% Glycerol, pH 7.3.
Isotype	IgG
Molecular Weight	Protein Mw: 47kDa Observed Mw: 57kDa
Storage Instruction	Store at -20°C for up to 1 year from the date of receipt, and avoid repeat freeze-thaw cycles.

TARGET INFORMATION

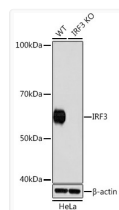
Gene ID	3661
Gene Symbol	IRF3
UniProt ID	IRF3_HUMAN
Immunogen Region	50-150
Immunogen Sequence	DFGIFQAWAEATGAYVPGRD KPDLPWKRNFRSALNRKEG LRLAEDRSKDPHDPHKIYEF VNSGVGDFSQPDTSPDTNGG GSTSDTQEDILDELLGNMVL A
Specificity	A synthetic peptide corresponding to a sequence within amino acids 50-150 of human IRF3 (Q14653).

ADDITIONAL INFORMATION

Note STRICTLY FOR FURTHER SCIENTIFIC RESEARCH USE ONLY (RUO). MUST NOT TO BE USED IN DIAGNOSTIC OR THERAPEUTIC APPLICATIONS.



Western blot analysis of various lysates using [KO Validated] IRF3 Rabbit monoclonal antibody (STJ11101781) at 1:1000 dilution. Secondary antibody: HRP Goat Anti-Rabbit IgG (H+L) (STJS000856) at 1:10000 dilution. Lysates/proteins: 25 Mu g per lane. Blocking buffer: 3% nonfat dry milk in TBST. Detection: ECL Basic Kit. Exposure time: 3min.



Western blot analysis of lysates from wild type (WT) and IRF3 knockout (KO) HeLa cells, using [KO Validated] IRF3 Rabbit monoclonal antibody (STJ11101781) at 1:1000 dilution. Secondary antibody: HRP Goat Anti-Rabbit IgG (H+L) (STJS000856) at 1:10000 dilution. Lysates/proteins: 25 Mu g per lane. Blocking buffer: 3% nonfat dry milk in TBST. Detection: ECL Basic Kit. Exposure time: 3min.