

Anti-SOX9 antibody (169-300) [S9MR] (STJ11101779)

GENERAL INFORMATION

Product Type	Primary antibodies
Applications	WB/IHC-P/IF/ICC/IP/ELISA
Host / Source	Rabbit
Reactivity	Human/Mouse/Rat

PRODUCT PROPERTIES

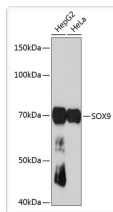
Clonality	Monoclonal
Concentration	Lot specific
Conjugation	Unconjugated
Purification	Affinity purification
Dilution Range	WB:1:1000-1:2000 IHC-P:1:100-1:500 IF/ICC:1:200-1:2000 IP:0.5 μ g-4 μ g antibody for 200 μ g-400 μ g extracts of whole cells ELISA:Recommended starting concentration is 1 μ g/mL. Please optimize the concentration based on your sp
Formulation	PBS with 0.02% Sodium Azide, 0.05% BSA, 50% Glycerol, pH 7.3.
Isotype	IgG
Molecular Weight	Protein Mw: 56kDa Observed Mw: 70kDa
Storage Instruction	Store at -20°C for up to 1 year from the date of receipt, and avoid repeat freeze-thaw cycles.

TARGET INFORMATION

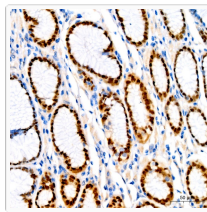
Gene ID	6662
Gene Symbol	SOX9
UniProt ID	SOX9_HUMAN
Immunogen Region	169-300
Immunogen Sequence	HPDYKYQPRRRKSVKNGQAE AEEATEQTHISPNAIFKALQ ADSPHSSSGMSEVHSPGEHS GQSQGPPTPTTPKTDVQPG KADLKREGRPLPEGGRQPPI DFRDVDIGELSSDVISNIET FDVNEFDQYLPP
Specificity	Recombinant fusion protein containing a sequence corresponding to amino acids 169-300 of human SOX9 (P48436).

ADDITIONAL INFORMATION

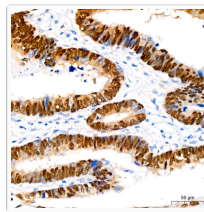
Note	STRICTLY FOR FURTHER SCIENTIFIC RESEARCH USE ONLY (RUO). MUST NOT TO BE USED IN DIAGNOSTIC OR THERAPEUTIC APPLICATIONS.
------	---



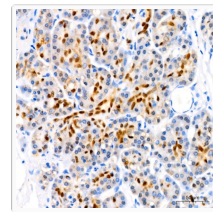
Western blot analysis of extracts of various cell lines, using SOX9 antibody (STJ11101779) at 1:1000 dilution. Secondary antibody: HRP Goat Anti-rabbit IgG (H+L) (STJS000856) at 1:10000 dilution. Lysates/proteins: 25 μ g per lane. Blocking buffer: 3% non-fat dry milk in TBST. Detection: ECL Basic Kit. Exposure time: 3min.



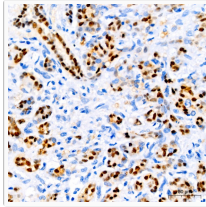
Immunohistochemistry analysis of paraffin-embedded human colon using SOX9 rabbit monoclonal antibody (STJ11101779) at dilution of 1:400 (40x lens). Perform high pressure antigen retrieval with 10 mM Tris/EDTA buffer pH 9.0 before commencing with immunohistochemistry staining protocol.



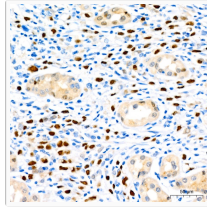
Immunohistochemistry analysis of paraffin-embedded human gastric cancer using SOX9 rabbit monoclonal antibody (STJ11101779) at dilution of 1:400 (40x lens). Perform high pressure antigen retrieval with 10 mM Tris/EDTA buffer pH 9.0 before commencing with immunohistochemistry staining protocol.



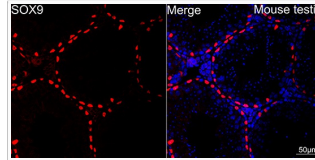
Immunohistochemistry analysis of paraffin-embedded human pancreas using SOX9 rabbit monoclonal antibody (STJ11101779) at dilution of 1:400 (40x lens). Perform high pressure antigen retrieval with 10 mM Tris/EDTA buffer pH 9.0 before commencing with immunohistochemistry staining protocol.



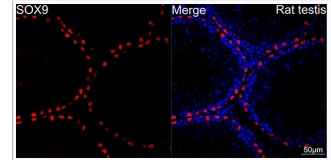
Immunohistochemistry analysis of paraffin-embedded Human pancreatic ductal carcinoma using SOX9 rabbit monoclonal antibody (STJ11101779) at dilution of 1:400 (40x lens). Perform high pressure antigen retrieval with 10 mM Tris/EDTA buffer pH 9.0 before commencing with immunohistochemistry staining protocol.



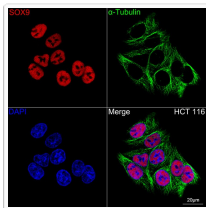
Immunohistochemistry analysis of paraffin-embedded human stomach using SOX9 rabbit monoclonal antibody (STJ11101779) at dilution of 1:400 (40x lens). Perform high pressure antigen retrieval with 10 mM Tris/EDTA buffer pH 9.0 before commencing with immunohistochemistry staining protocol.



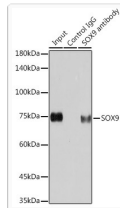
Confocal imaging of paraffin-embedded mouse testis using SOX9 rabbit monoclonal antibody (STJ11101779, dilution 1:200) followed by a further incubation with Cy3 Goat Anti-rabbit IgG (H+L) (dilution 1:500) (Red). DAPI was used for nuclear staining (Blue). Objective: 40x. Perform high pressure antigen retrieval with 0.01M citrate buffer (pH 6.0) prior to IF staining.



Confocal imaging of paraffin-embedded Rat testis using SOX9 rabbit monoclonal antibody (STJ11101779, dilution 1:200) followed by a further incubation with Cy3 Goat Anti-rabbit IgG (H+L) (dilution 1:500) (Red). DAPI was used for nuclear staining (Blue). Objective: 40x. Perform high pressure antigen retrieval with 0.01M citrate buffer (pH 6.0) prior to IF staining.



Confocal imaging of HCT 116 cells using SOX9 rabbit monoclonal antibody (STJ11101779, dilution 1:200) followed by a further incubation with Cy3 Goat Anti-rabbit IgG (H+L) (dilution 1:500) (Red). The cells were counterstained with Alpha-Tubulin mouse monoclonal antibody (dilution 1:400) followed by incubation with ABflo® 488-conjugated Goat Anti-mouse IgG (H+L) antibody (dilution 1:500) (Green). DAPI was used for nuclear staining (Blue). Objective: 100x.



Immunoprecipitation analysis of 200 μ g extracts of HeLa cells using 3 μ g SOX9 antibody (STJ11101779). Western blot was performed from the immunoprecipitate using SOX9 antibody (STJ11101779) at a dilution of 1:1000.