

Anti-BCL2 antibody (1-211) [S9MR] (STJ11101769)

GENERAL INFORMATION

Product Type	Primary antibodies
Applications	WB/IHC-P/IP/ELISA
Host / Source	Rabbit
Reactivity	Human/Mouse/Rat

PRODUCT PROPERTIES

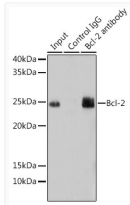
Clonality	Monoclonal
Concentration	Lot specific
Conjugation	Unconjugated
Purification	Affinity purification
Dilution Range	WB:1:1000-1:2000 IHC-P:1:200-1:800 IP:0.5 Mu g-4 Mu g antibody for 400 Mu g-600 Mu g extracts of whole cells ELISA:Recommended starting concentration is 1 Mu g/mL. Please optimize the concentration based on your specific assay requirement
Formulation	PBS with 0.09% Sodium Azide, 0.05% BSA, 50% Glycerol, pH7.3.
Isotype	IgG
Molecular Weight	Protein Mw: 26kDa Observed Mw: 26kDa
Storage Instruction	Store at -20°C for up to 1 year from the date of receipt, and avoid repeat freeze-thaw cycles.

TARGET INFORMATION

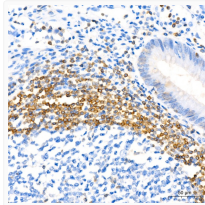
Gene ID	596
Gene Symbol	BCL2
UniProt ID	BCL2_HUMAN
Immunogen Region	1-211
Immunogen Sequence	MAHAGRTGYDNREIVMKYIH YKLSQRGYEWDAGDVGAAPP GAAPAPGIFSSQPGHTPHPA ASRDPVARTSPLQTPAAPGA AAGPALSPPVPPVVHLTLRQA GDDFSRRYRRDFAEMSSQLH LTPFTARGRFATVVEELFRD GVNWGRIVAFFEFGVMCWE SVNREMSPLVDNIALWMTEY LNRHLHTWIQDNGGWDAFVE LYGSPMRPLFD
Specificity	Recombinant fusion protein containing a sequence corresponding to amino acids 1-211 of human Bcl-2 (P10415).

ADDITIONAL INFORMATION

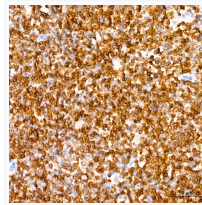
Note STRICTLY FOR FURTHER SCIENTIFIC RESEARCH USE ONLY (RUO). MUST NOT TO BE USED IN DIAGNOSTIC OR THERAPEUTIC APPLICATIONS.



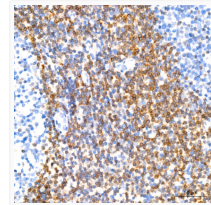
Immunoprecipitation analysis of 200 Mu g extracts of Mouse lung using 3 Mu g Bcl-2 antibody (STJ11101769). Western blot was performed from the immunoprecipitate using Bcl-2 antibody (STJ11101769) at a dilution of 1:1000.



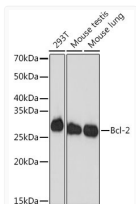
Immunohistochemistry analysis of Bcl-2 in paraffin-embedded human appendix using Bcl-2 Rabbit monoclonal antibody (STJ11101769) at dilution of 1:100 (40x lens). Perform high pressure antigen retrieval with 10 mM citrate buffer pH 6. 0 before commencing with immunohistochemistry staining protocol.



Immunohistochemistry analysis of Bcl-2 in paraffin-embedded human follicular lymphoma using Bcl-2 Rabbit monoclonal antibody (STJ11101769) at dilution of 1:100 (40x lens). Perform high pressure antigen retrieval with 10 mM citrate buffer pH 6. 0 before commencing with immunohistochemistry staining protocol.



Immunohistochemistry analysis of Bcl-2 in paraffin-embedded human tonsil using Bcl-2 Rabbit monoclonal antibody (STJ11101769) at dilution of 1:100 (40x lens). Perform high pressure antigen retrieval with 10 mM citrate buffer pH 6. 0 before commencing with immunohistochemistry staining protocol.



Western blot analysis of various lysates using Bcl-2 Rabbit monoclonal antibody (STJ11101769) at 1:1000 dilution. Secondary antibody: HRP Goat Anti-Rabbit IgG (H+L) (STJS000856) at 1:10000 dilution. Lysates/proteins: 25 Mu g per lane. Blocking buffer: 3% nonfat dry milk in TBST. Detection: ECL Basic Kit. Exposure time: 3min.