

Anti-UBB antibody (1-228) [S6MR] (STJ11101766)

GENERAL INFORMATION

Product Type	Primary antibodies
Applications	WB/IHC-P/ELISA
Host / Source	Rabbit
Reactivity	Human/Mouse/Rat/Other

PRODUCT PROPERTIES

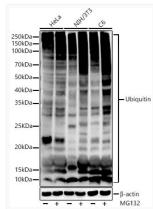
Clonality	Monoclonal
Concentration	Lot specific
Conjugation	Unconjugated
Purification	Affinity purification
Dilution Range	WB:1:1000-1:4000 IHC-P:1:1000-1:10000 ELISA:Recommended starting concentration is 1 Mu g/mL. Please optimize the concentration based on your specific assay requirements.
Formulation	PBS with 0.05% Proclin300, 0.05% BSA, 50% Glycerol, pH 7.3.
Isotype	IgG
Molecular Weight	Protein Mw: 26kDa Observed Mw: 15-300kDa
Storage Instruction	Store at -20°C for up to 1 year from the date of receipt, and avoid repeat freeze-thaw cycles.

TARGET INFORMATION

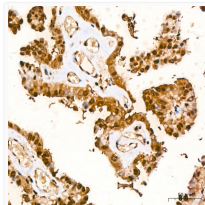
Gene ID	7314
Gene Symbol	UBB
UniProt ID	UBB_HUMAN
Immunogen Region	1-228
Immunogen Sequence	MQIFVKLTGKITLEVEPS DTIENVKAKIQDKEGIPPDQ QRLIFAGKQLEDGRTLSDYNIQKESTLHLVLRGGMQIFVKLTGKITLEVEPSDTIENVKAKIQDKEGIPPDQQRLLIFAGK QLEDGRTLSDYNIQKESTLHLVLRGG
Specificity	Recombinant fusion protein containing a sequence corresponding to amino acids 1-228 of human Ubiquitin (AAH46123.1).

ADDITIONAL INFORMATION

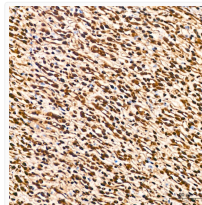
Note STRICTLY FOR FURTHER SCIENTIFIC RESEARCH USE ONLY (RUO). MUST NOT TO BE USED IN DIAGNOSTIC OR THERAPEUTIC APPLICATIONS.



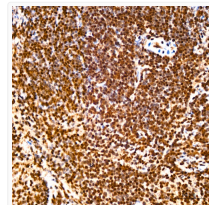
Western blot analysis of extracts of various cell lines, using Ubiquitin antibody (STJ11101766) at 1:1000 dilution. HeLa, NIH/3T3 and C6 cell were treated by MG132 (50 Mu M) at 37 °C for 90 minutes. Secondary antibody: HRP Goat Anti-rabbit IgG (H+L) (STJS000856) at 1:10000 dilution. Lysates/proteins: 25 Mu g per lane. Blocking buffer: 3% non-fat dry milk in TBST. Detection: ECL Basic Kit. Exposure time: 20s.



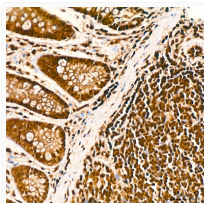
Immunohistochemistry analysis of Ubiquitin in paraffin-embedded human thyroid cancer tissue using Ubiquitin rabbit monoclonal antibody (STJ11101766) at a dilution of 1:1000 (40x lens). High pressure antigen retrieval was performed with 0.01 M citrate buffer (pH 6.0) prior to immunohistochemistry staining.



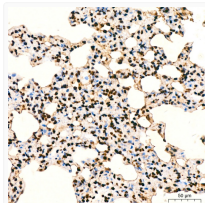
Immunohistochemistry analysis of Ubiquitin in paraffin-embedded mouse kidney tissue using Ubiquitin rabbit monoclonal antibody (STJ11101766) at a dilution of 1:1000 (40x lens). High pressure antigen retrieval was performed with 0.01 M citrate buffer (pH 6.0) prior to immunohistochemistry staining.



Immunohistochemistry analysis of Ubiquitin in paraffin-embedded mouse spleen tissue using Ubiquitin rabbit monoclonal antibody (STJ11101766) at a dilution of 1:1000 (40x lens). High pressure antigen retrieval was performed with 0.01 M citrate buffer (pH 6.0) prior to immunohistochemistry staining.



Immunohistochemistry analysis of Ubiquitin in paraffin-embedded rat colon tissue using Ubiquitin rabbit monoclonal antibody (STJ11101766) at a dilution of 1:1000 (40x lens). High pressure antigen retrieval was performed with 0.01 M citrate buffer (pH 6.0) prior to immunohistochemistry staining.



Immunohistochemistry analysis of Ubiquitin in paraffin-embedded rat lung tissue using Ubiquitin rabbit monoclonal antibody (STJ11101766) at a dilution of 1:1000 (40x lens). High pressure antigen retrieval was performed with 0.01 M citrate buffer (pH 6.0) prior to immunohistochemistry staining.