

Anti-PPARGC1A/PPARGC1B antibody (699-798) [S7MR] (STJ11101757)

GENERAL INFORMATION

Product Type	Primary antibodies
Applications	WB/ELISA
Host / Source	Rabbit
Reactivity	Mouse/Rat

PRODUCT PROPERTIES

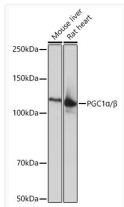
Clonality	Monoclonal
Concentration	Lot specific
Conjugation	Unconjugated
Purification	Affinity purification
Dilution Range	WB:1:1000-1:6000 ELISA:Recommended starting concentration is 1 µg/mL. Please optimize the concentration based on your specific assay requirements.
Formulation	PBS with 0.02% Sodium Azide, 0.05% BSA, 50% Glycerol, pH 7.3.
Isotype	IgG
Molecular Weight	Protein Mw: 113kDa Observed Mw: 113kDa
Storage Instruction	Store at -20°C for up to 1 year from the date of receipt, and avoid repeat freeze-thaw cycles.

TARGET INFORMATION

Gene ID	133522 10891
Gene Symbol	PPARGC1B PPARGC1A
UniProt ID	PRGC2_HUMAN PRGC1_HUMAN
Immunogen Region	699-798
Immunogen Sequence	VFGEIEECTVNLRDDGDSYG FITYRYTCDAAFAALENGYTL RRSNETDFELYFCGRKQFFK SNYADLDSNSDDFDPASTKS KYDSLDFDLSLLKEAQRSLRR
Specificity	A synthetic peptide corresponding to a sequence within amino acids 699-798 of human PGC1 Alpha/Beta (NP_037393.1).

ADDITIONAL INFORMATION

Note STRICTLY FOR FURTHER SCIENTIFIC RESEARCH USE ONLY (RUO). MUST NOT TO BE USED IN DIAGNOSTIC OR THERAPEUTIC APPLICATIONS.



Western blot analysis of various lysates using PGC1 Alpha/ Beta Rabbit monoclonal antibody (STJ11101757) at 1:1000 dilution. Secondary antibody: HRP Goat Anti-Rabbit IgG (H+L) (STJS000856) at 1:10000 dilution. Lysates/proteins: 25 µg per lane. Blocking buffer: 3% nonfat dry milk in TBST. Detection: ECL Basic Kit. Exposure time: 1s.