

## Anti-MAP1LC3B antibody (2-107) [S4MR] (STJ11101754)

### GENERAL INFORMATION

Product Type	Primary antibodies
Applications	WB/IHC-P/IF/ICC/IP/ELISA
Host / Source	Rabbit
Reactivity	Human/Mouse/Rat

### PRODUCT PROPERTIES

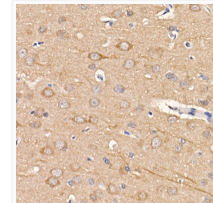
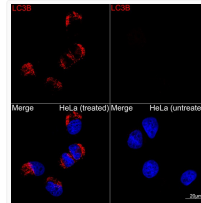
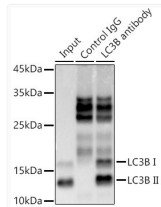
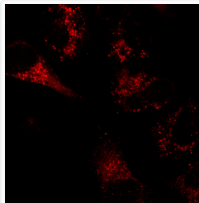
Clonality	Monoclonal
Concentration	Lot specific
Conjugation	Unconjugated
Purification	Affinity purification
Dilution Range	WB:1:1000-1:4000 IHC-P:1:100-1:500 IF/CC:1:200-1:800 IP:0.5 Mu g-4 Mu g antibody for 200 Mu g-400 Mu g extracts of whole cells ELISA:Recommended starting concentration is 1 Mu g/mL. Please optimize the concentration based on your spe
Formulation	PBS with 0.05% Proclin300, 0.05% BSA, 50% Glycerol, pH7.3.
Isotype	IgG
Molecular Weight	Protein Mw: 15kDa Observed Mw: 14kDa/16kDa
Storage Instruction	Store at-20°C for up to 1 year from the date of receipt, and avoid repeat freeze-thaw cycles.

### TARGET INFORMATION

Gene ID	<a href="#">81631</a>
Gene Symbol	<a href="#">MAP1LC3B</a>
UniProt ID	<a href="#">MLP3B_HUMAN</a>
Immunogen Region	2-107
Immunogen Sequence	PSEKTFKQRRTFEQRVEDVR LIREQHPTKIPVIIERYKGE KQLPVLDTKFLVPDHNMS ELIKIIRRRRLQLNANQAFFL LVNGHSMVSVSTPISEVYES EKDEDG
Specificity	Recombinant fusion protein containing a sequence corresponding to amino acids 2-107 of human LC3B (Q9GZQ8).

### ADDITIONAL INFORMATION

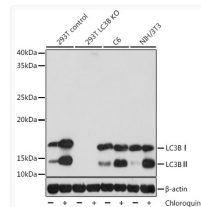
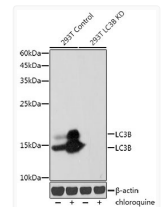
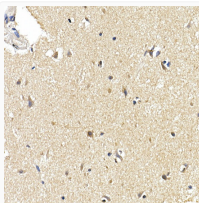
Note STRICTLY FOR FURTHER SCIENTIFIC RESEARCH USE ONLY (RUO). MUST NOT TO BE USED IN DIAGNOSTIC OR THERAPEUTIC APPLICATIONS.



Immunoprecipitation analysis of 300 Mu g extracts from 293T cells using 3 Mu g [KD Validated] LC3B Rabbit monoclonal antibody (STJ11101754). Western blot was performed from the immunoprecipitate using LC3B antibody (STJ11101754) at a dilution of 1:1000.

Confocal imaging of HeLa cells (treated with chloroquine) and HeLa cells (untreated) using [KD Validated] LC3B Rabbit monoclonal antibody (STJ11101754, dilution 1:100) (Red). DAPI was used for nuclear staining (blue). Objective: 100x.

Immunohistochemistry analysis of LC3B in paraffin-embedded rat brain using [KD Validated] LC3B Rabbit monoclonal antibody (STJ11101754) at dilution of 1:100 (40x lens). Perform high pressure antigen retrieval with 10 mM citrate buffer pH 6.0 before commencing with immunohistochemistry staining protocol.



Immunohistochemistry analysis of LC3B in paraffin-embedded human brain using [KD Validated] LC3B Rabbit monoclonal antibody (STJ11101754) at dilution of 1:100 (40x lens). Perform high pressure antigen retrieval with 10 mM citrate buffer pH 6.0 before commencing with immunohistochemistry staining protocol.

Western blot analysis of lysates from wild type (WT) and LKB1 knockdown (KD) 293T cells, using [KD Validated] LC3B Rabbit monoclonal antibody (STJ11101754) at 1:1000 dilution. Secondary antibody: HRP Goat Anti-Rabbit IgG (H+L) (STJS000856) at 1:10000 dilution. Lysates/proteins: 25 Mu g per lane. Blocking buffer: 3% nonfat dry milk in TBST. Detection: ECL Basic Kit. Exposure time: 30s.

Western blot analysis of various lysates, using [KD Validated] LC3B Rabbit monoclonal antibody (STJ11101754) at 1:1000 dilution. 293T, C6 and NIH/3T3 cells were treated by Chloroquine (50 Mu M) at 37 °C for 20 hours. Secondary antibody: HRP Goat Anti-Rabbit IgG (H+L) (STJS000856) at 1:10000 dilution. Lysates/proteins: 25 Mu g per lane. Blocking buffer: 3% nonfat dry milk in TBST. Detection: ECL Basic Kit. Exposure time: 5s.